



**** MODERN ** ** SET BACK ** ** CLOSE TO ALL AMMENITIES ****
**** FIRST TIME BUYER OR INVESTOR ****

Take a look at this spacious two double bedroom mid terraced house. Located close to local amenities and is perfect for the first time buyer or investor. Viewing is highly recommended to appreciate the square footage and outside space.

Please contact Smith & Friends to arrange a viewing
Council tax band B. Freehold basis. EPC Band D.

Moule Close, Newton Aycliffe, DL5 5HJ
2 Bed - House - Mid Link Terrace
£110,000
EPC Rating: D
Council Tax Band: A
Tenure: Freehold



SMITH &
FRIENDS
ESTATE AGENTS

Moule Close, Newton Aycliffe, DL5 5HJ



Entrance Porch

Lounge
14'11" x 9'10" (4.57m x 3m)

Kitchen
14'8" x 14'10" (4.49m x 4.54m)

First Floor Landing

Bedroom
14'8" x 9'8" (4.49m x 2.97m)

Bedroom
11'11" x 8'11" (3.65m x 2.74m)

Bathroom/w.c.

Front External

Rear Garden

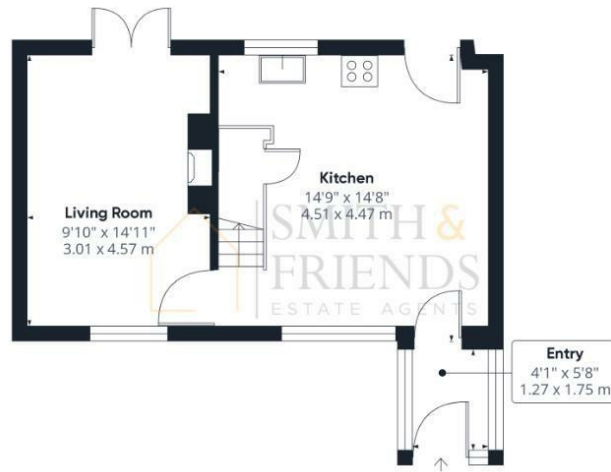


Moule Close, Newton Aycliffe, DL5 5HJ



www.smith-and-friends.co.uk

Moule Close, Newton Aycliffe, DL5 5HJ



Approximate total area⁽¹⁾
711.83 ft²
66.13 m²

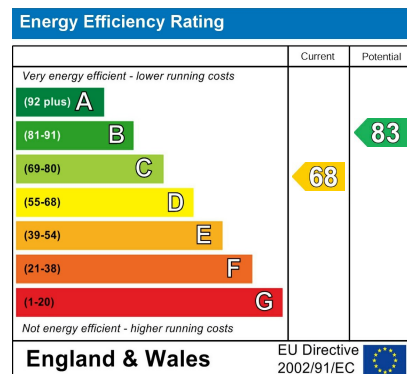
(1) Excluding balconies and terraces

While every attempt has been made to ensure accuracy, all measurements are approximate, not to scale. This floor plan is for illustrative purposes only.

Calculations are based on RICS IPMS 3C standard.

GIRAFFE 360

For clarification we wish to inform prospective purchasers that we have prepared these sales particulars as a general guide. We have not carried out a detailed survey, nor tested the services, appliances and specific fittings. Room sizes should not be relied upon for carpets and furnishings, if there are important matters which are likely to affect your decision to buy, please contact us before viewing the property. Smith & Friends Estate Agents can recommend financial services, surveying and conveyancing services to sellers and buyers. Smith & Friends Estate Agents staff may benefit from referral incentives relating to these services.



7 Duke Street, Darlington, Co. Durham, DL3 7RX

01325 484440

darlington@smith-and-friends.co.uk

www.smith-and-friends.co.uk

