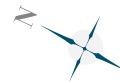


- RÍO REAL -



THE LIST - RÍO REAL  
27 TOWNHOUSES PROJECT

The List Río Real is a complex made up of 27 townhouses which boast excellent quality finishes. The project will offer 2 types of semi-detached homes, with 4 and 5 bedrooms, spread over the basement, ground floor, and first floor. They also include a solarium with a private swimming pool, offering incredible sea views, tranquillity, and privacy.



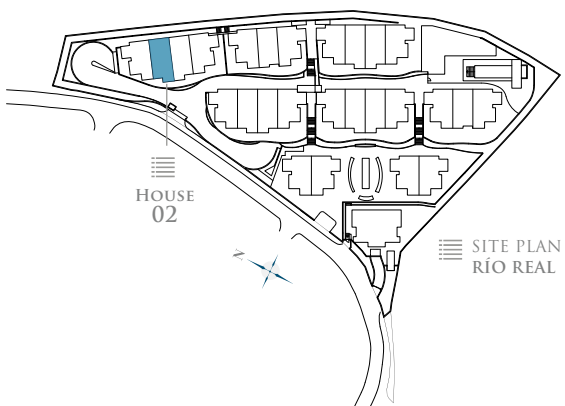
PARCELA: PA-RR-9.  
"LOMAS DEL POZUELO". MARBELLA  
TOTAL PLOT AREA: 11.973,45 m<sup>2</sup>

*·NOTE: This document is informative. The floor plans and areas expressed may undergo variations due to technical demands of the project. The furniture shown is not included being merely illustrative.*



2  
FLOOR PLAN

FLOORS  
- HOUSE TWO -



- BASEMENT -



- GROUND FLOOR -



- FIRST FLOOR -



- ROOF FLOOR -

TOTAL USEFUL AREA:  
**362,03 m<sup>2</sup>**

TOTAL USEFUL AREA  
ACCORDING TO RD 218/2005:  
**253,77 m<sup>2</sup>**

BUILT AREA

LIVING AREA 217,35 m<sup>2</sup>

TERRACES 145,80 m<sup>2</sup>

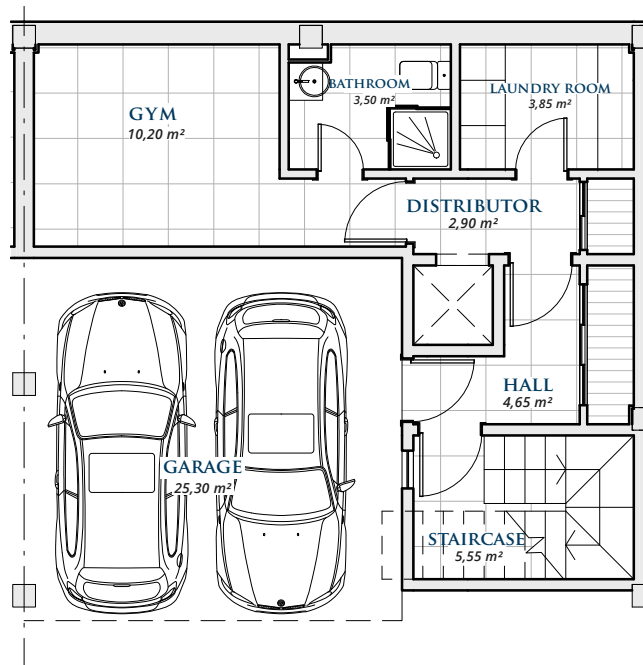
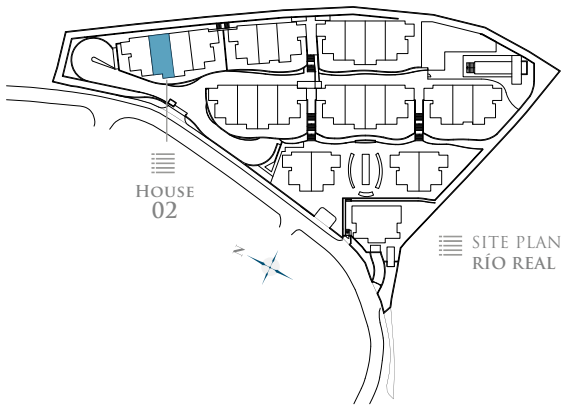
BASEMENT 63,32 m<sup>2</sup>

PRIVATE GARDEN 18,52 m<sup>2</sup>

TOTAL BUILT AREA: **426,47 m<sup>2</sup>**

2  
FLOOR PLAN

BASEMENT  
- HOUSE TWO -



BASEMENT

Basement	39,67 m <sup>2</sup>
Garage	23,65 m <sup>2</sup>
<b>TOTAL BUILT AREA:</b>	<b>63,32 m<sup>2</sup></b>

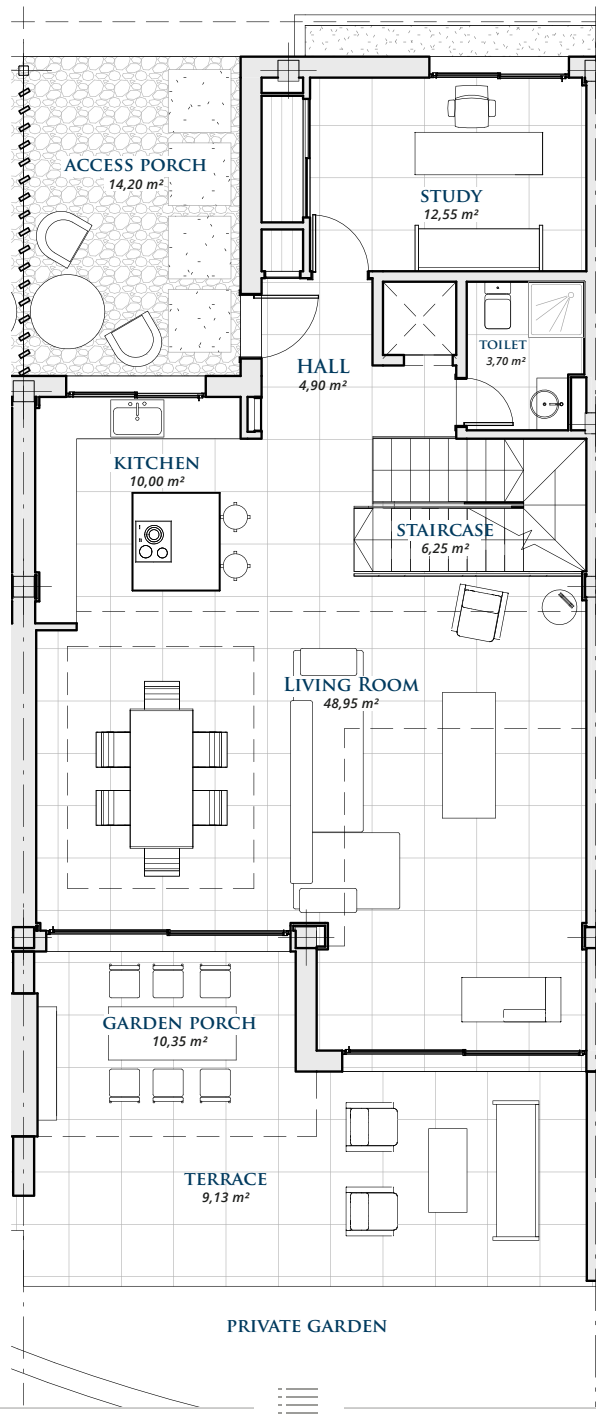
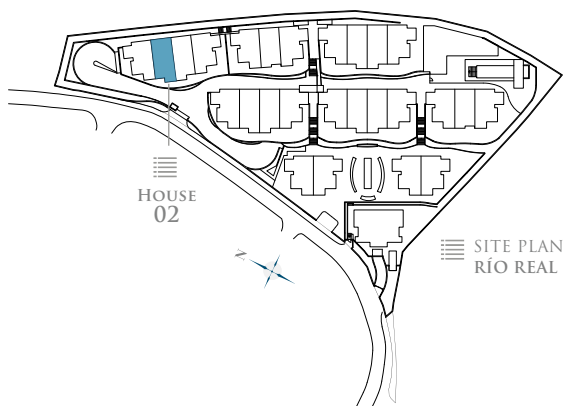
\* Basements are subject to modifications due to installation requirements.

GRAPHIC SCALE 1:100



2  
FLOOR PLAN

GROUND FLOOR  
- HOUSE TWO -



GROUND FLOOR

Living Area	105,35 m <sup>2</sup>
Terrace	31,30 m <sup>2</sup>
<b>TOTAL BUILT AREA:</b>	<b>136,65 m<sup>2</sup></b>

GRAPHIC SCALE 1:100



# THE LIST

SINGULAR HOMES

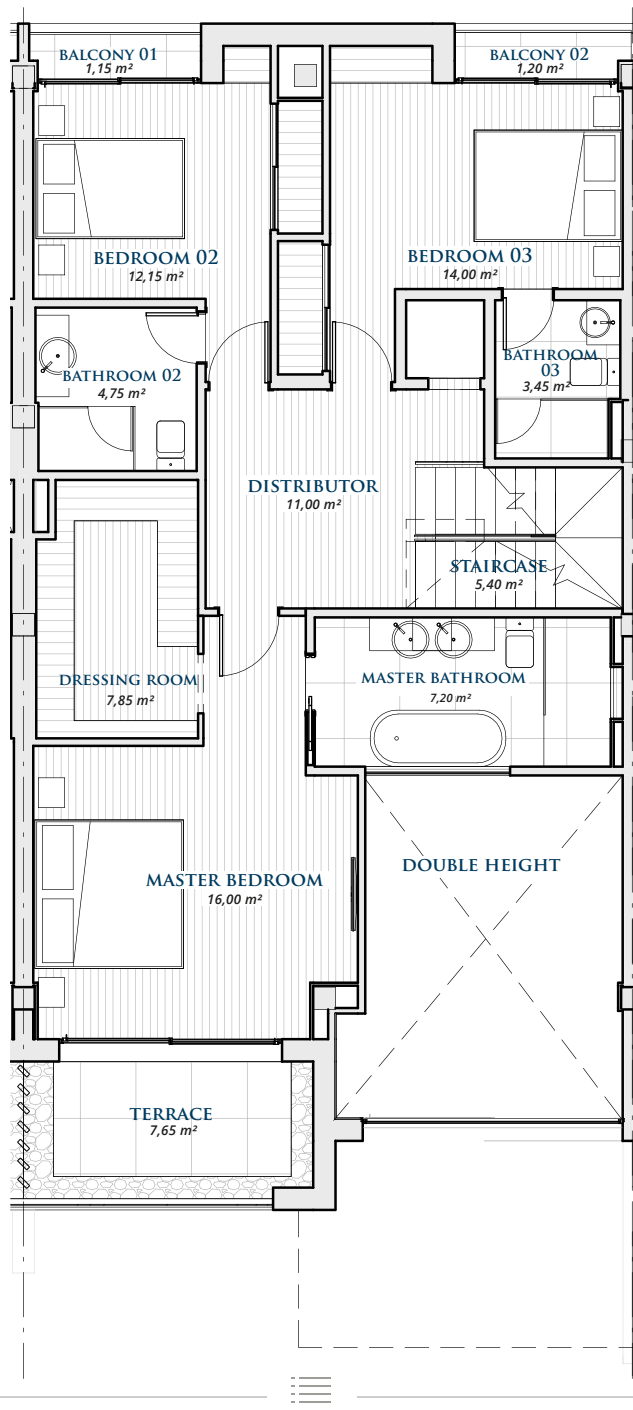
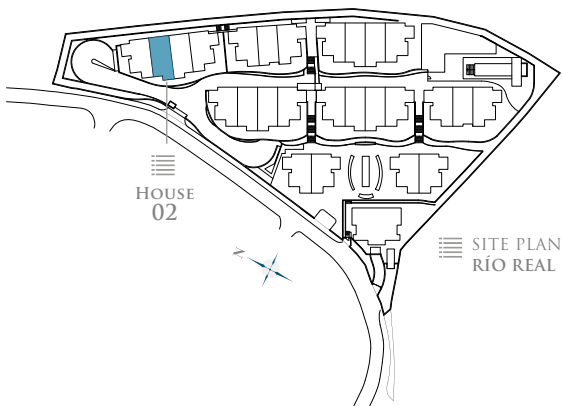
- RÍO REAL -

## 2

### FLOOR PLAN

### FIRST FLOOR

- HOUSE TWO -



### FIRST FLOOR

Living Area 100,00 m<sup>2</sup>

Terrace 10,5 m<sup>2</sup>

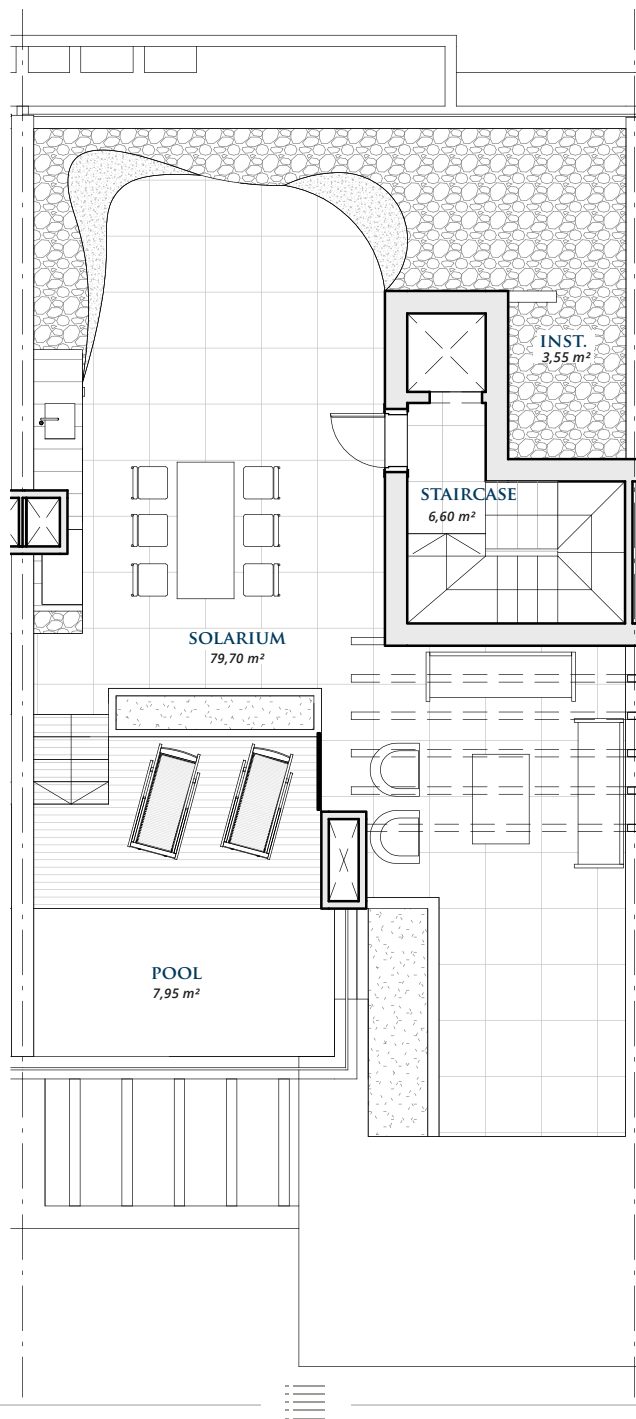
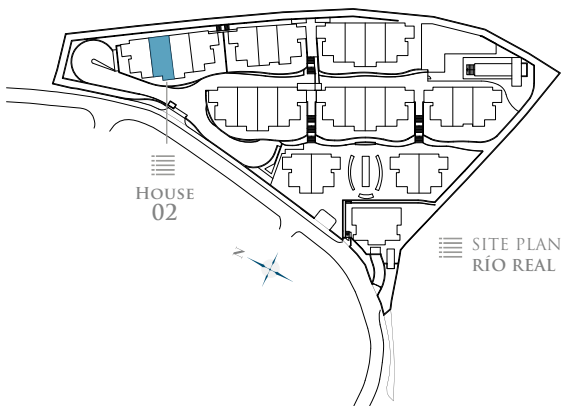
**TOTAL BUILT AREA: 110,50 m<sup>2</sup>**

GRAPHIC SCALE 1:100



2  
FLOOR PLAN

ROOF FLOOR  
- HOUSE TWO -



ROOF FLOOR

Closed Area 12,00 m<sup>2</sup>

Terrace 104,00 m<sup>2</sup>

**TOTAL BUILT AREA: 116,00 m<sup>2</sup>**

GRAPHIC SCALE 1:100

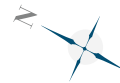


- RÍO REAL -



THE LIST - RÍO REAL  
27 TOWNHOUSES PROJECT

The List Río Real is a complex made up of 27 townhouses which boast excellent quality finishes. The project will offer 2 types of semi-detached homes, with 4 and 5 bedrooms, spread over the basement, ground floor, and first floor. They also include a solarium with a private swimming pool, offering incredible sea views, tranquillity, and privacy.



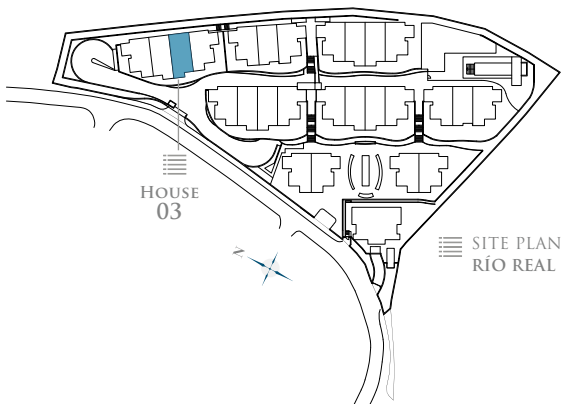
PARCELA: PA-RR-9.  
"LOMAS DEL POZUELO". MARBELLA  
TOTAL PLOT AREA: 11.973,45 m<sup>2</sup>

*·NOTE: This document is informative. The floor plans and areas expressed may undergo variations due to technical demands of the project. The furniture shown is not included being merely illustrative.*



3  
FLOOR PLAN

FLOORS  
- HOUSE THREE -



- BASEMENT -



- GROUND FLOOR -



- FIRST FLOOR -



- ROOF FLOOR -

TOTAL USEFUL AREA:  
**362,03 m<sup>2</sup>**

TOTAL USEFUL AREA  
ACCORDING TO RD 218/2005:  
**253,77 m<sup>2</sup>**

BUILT AREA

LIVING AREA	217,35 m <sup>2</sup>
TERRACES	145,80 m <sup>2</sup>
BASEMENT	63,32 m <sup>2</sup>
PRIVATE GARDEN	20,83 m <sup>2</sup>
<b>TOTAL BUILT AREA:</b>	<b>426,47 m<sup>2</sup></b>



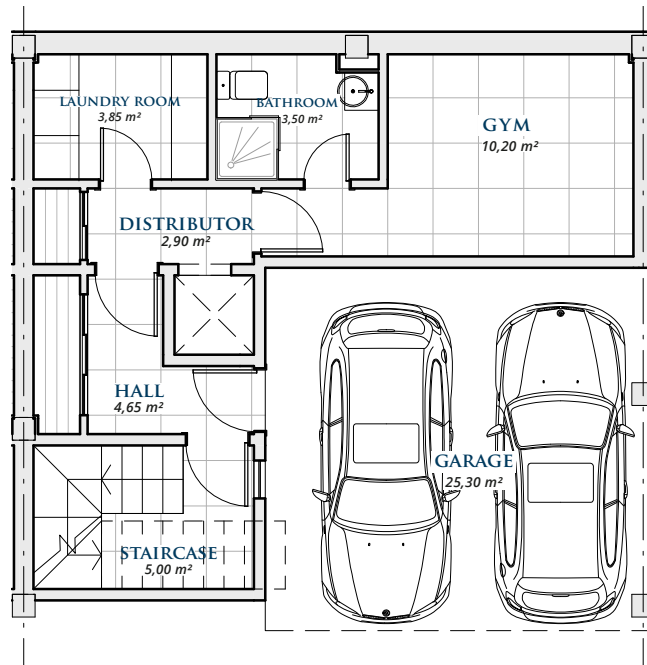
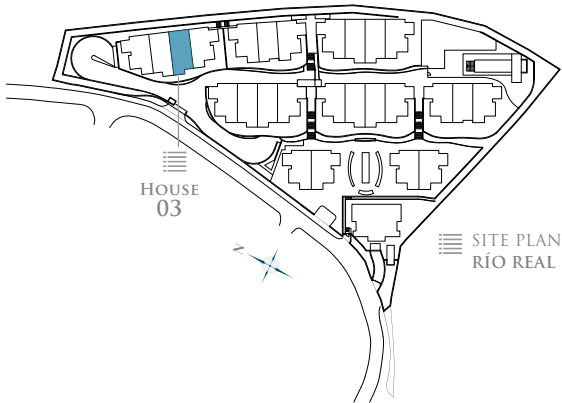


3

FLOOR PLAN

BASEMENT

- HOUSE THREE -



BASEMENT

Basement	39,67 m <sup>2</sup>
Garage	23,65 m <sup>2</sup>
<b>TOTAL BUILT AREA:</b>	<b>63,32 m<sup>2</sup></b>

\* Basements are subject to modifications due to installation requirements.

GRAPHIC SCALE 1:100



# THE LIST

SINGULAR HOMES

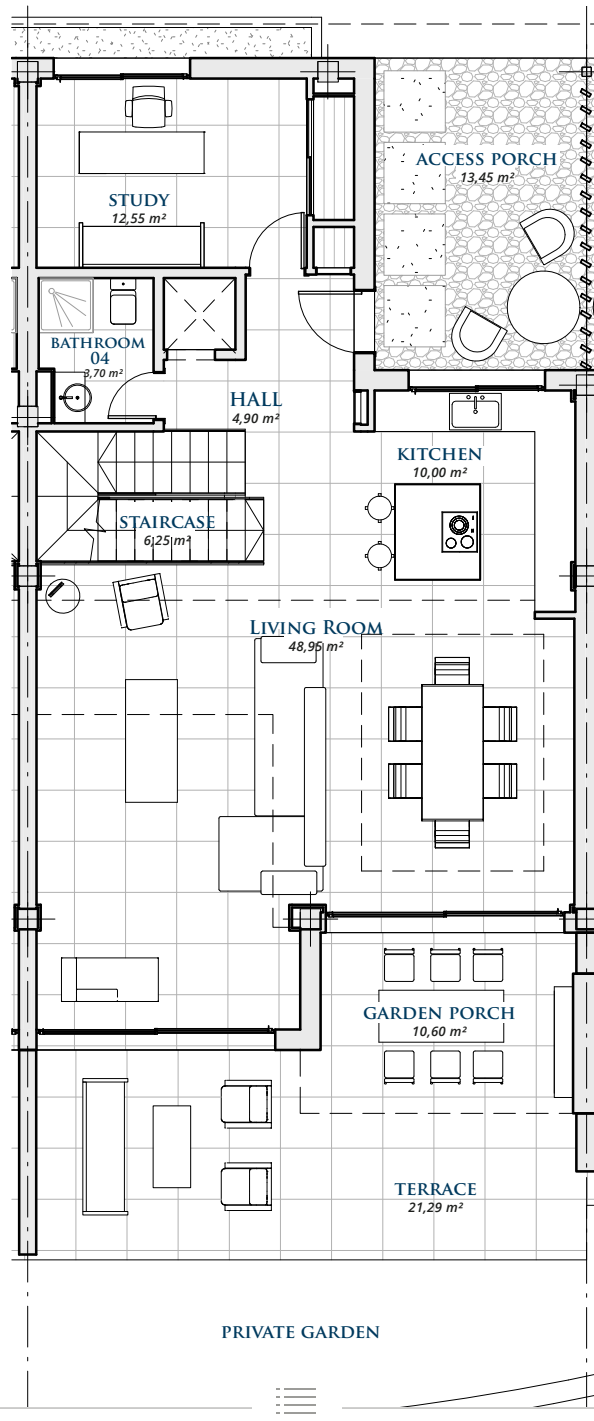
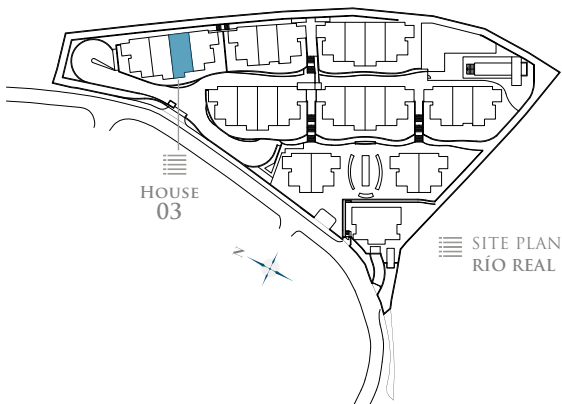
- RÍO REAL -

## 3

### FLOOR PLAN

## GROUND FLOOR

- HOUSE THREE -



### GROUND FLOOR

Living Area 105,35 m<sup>2</sup>

Terrace 31,30 m<sup>2</sup>

TOTAL BUILT AREA: 136,65 m<sup>2</sup>

GRAPHIC SCALE 1:100



# THE LIST

SINGULAR HOMES

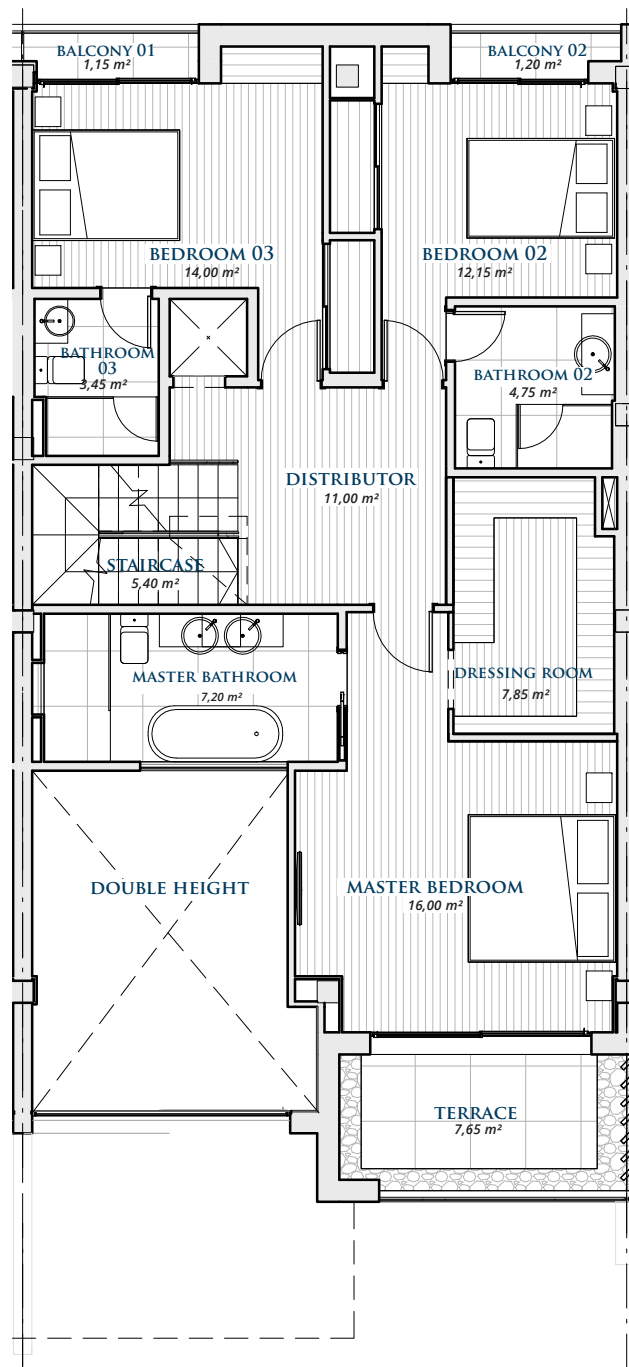
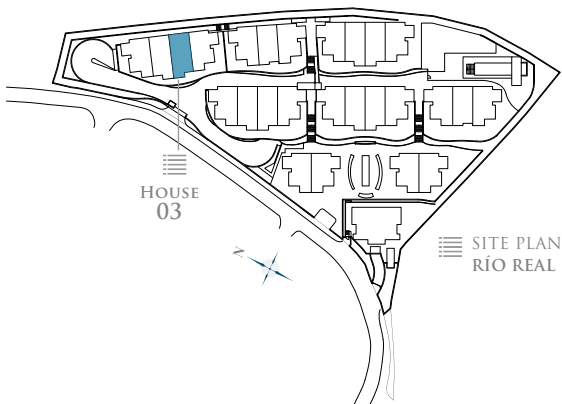
- RÍO REAL -

## 3

### FLOOR PLAN

### FIRST FLOOR

- HOUSE THREE -



#### FIRST FLOOR

Living Area 100,00 m<sup>2</sup>

Terrace 10,5 m<sup>2</sup>

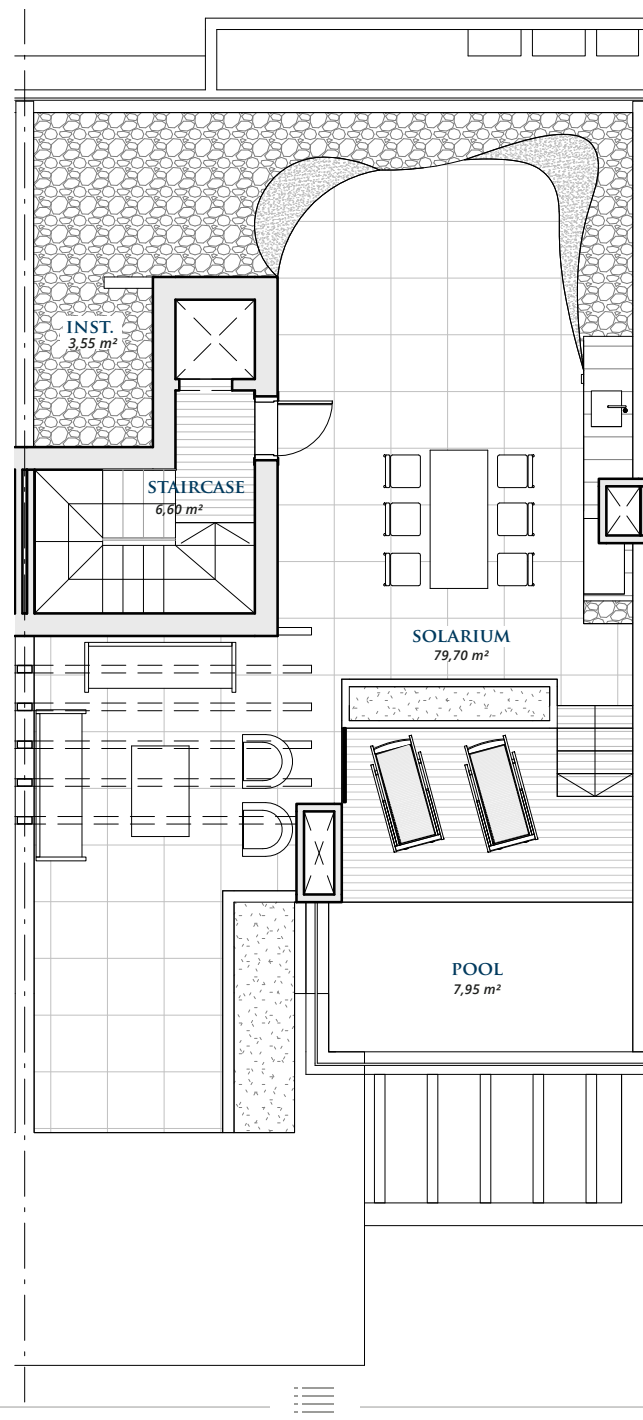
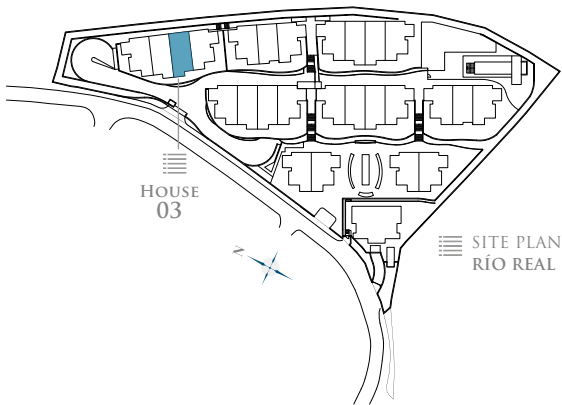
**TOTAL BUILT AREA: 110,50 m<sup>2</sup>**

GRAPHIC SCALE 1:100



3  
FLOOR PLAN

ROOF FLOOR  
- HOUSE THREE -



ROOF FLOOR

Closed Area	12,00 m <sup>2</sup>
Terrace	104,00 m <sup>2</sup>
<b>TOTAL BUILT AREA:</b>	<b>116,00 m<sup>2</sup></b>

GRAPHIC SCALE 1:100

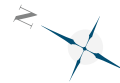


- RÍO REAL -



THE LIST - RÍO REAL  
27 TOWNHOUSES PROJECT

The List Río Real is a complex made up of 27 townhouses which boast excellent quality finishes. The project will offer 2 types of semi-detached homes, with 4 and 5 bedrooms, spread over the basement, ground floor, and first floor. They also include a solarium with a private swimming pool, offering incredible sea views, tranquillity, and privacy.



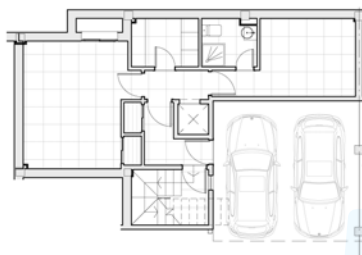
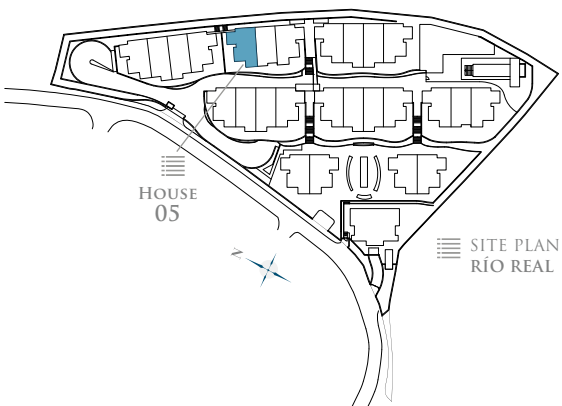
PARCELA: PA-RR-9.  
"LOMAS DEL POZUELO". MARBELLA  
TOTAL PLOT AREA: 11.973,45 m<sup>2</sup>

*·NOTE: This document is informative. The floor plans and areas expressed may undergo variations due to technical demands of the project. The furniture shown is not included being merely illustrative.*



5  
FLOOR PLAN

FLOORS  
- HOUSE FIVE -



- BASEMENT -



- GROUND FLOOR -



- FIRST FLOOR -



- ROOF FLOOR -

TOTAL USEFUL AREA:  
**416,61 m<sup>2</sup>**

TOTAL USEFUL AREA  
ACCORDING TO RD 218/2005:  
**280,61 m<sup>2</sup>**

BUILT AREA

LIVING AREA 235,25 m<sup>2</sup>

TERRACES 191,65 m<sup>2</sup>

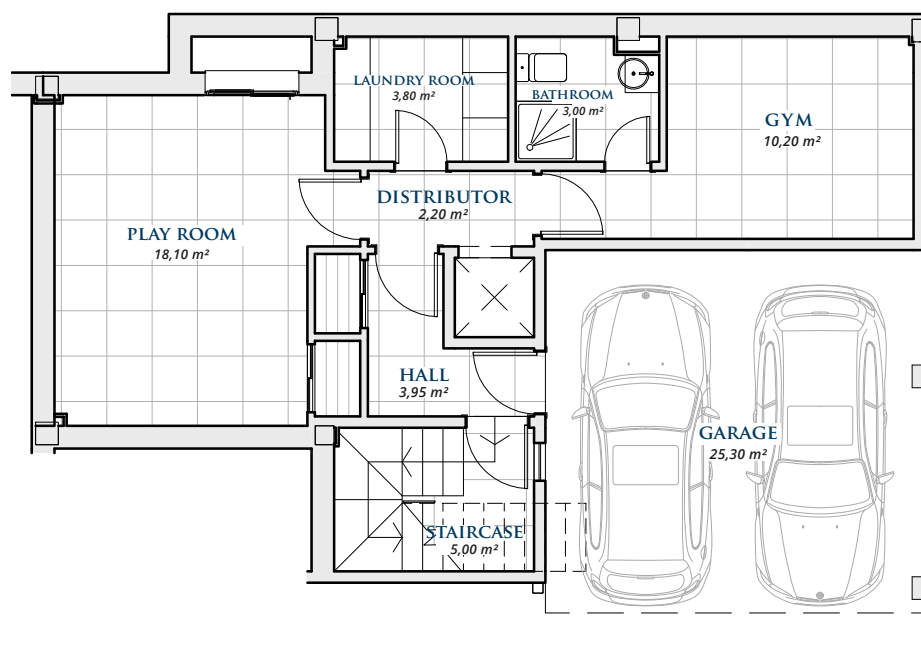
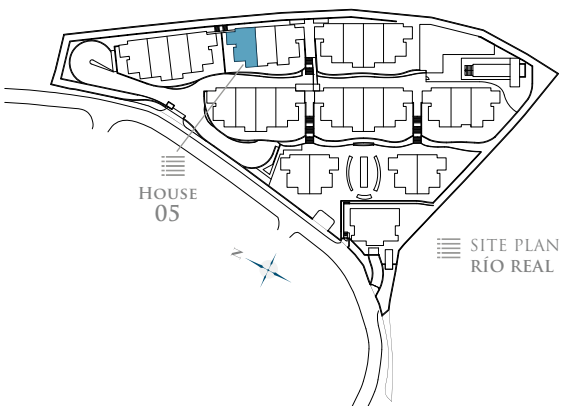
BASEMENT 79,41 m<sup>2</sup>

PRIVATE GARDEN 66,82 m<sup>2</sup>

TOTAL BUILT AREA: **506,31 m<sup>2</sup>**

5  
FLOOR PLAN

BASEMENT  
- HOUSE FIVE -



BASEMENT

Basement	55,76 m <sup>2</sup>
Garage	23,65 m <sup>2</sup>
<b>TOTAL BUILT AREA:</b>	<b>79,41 m<sup>2</sup></b>

\* Basements are subject to modifications due to installation requirements.

GRAPHIC SCALE 1:100



# THE LIST

SINGULAR HOMES

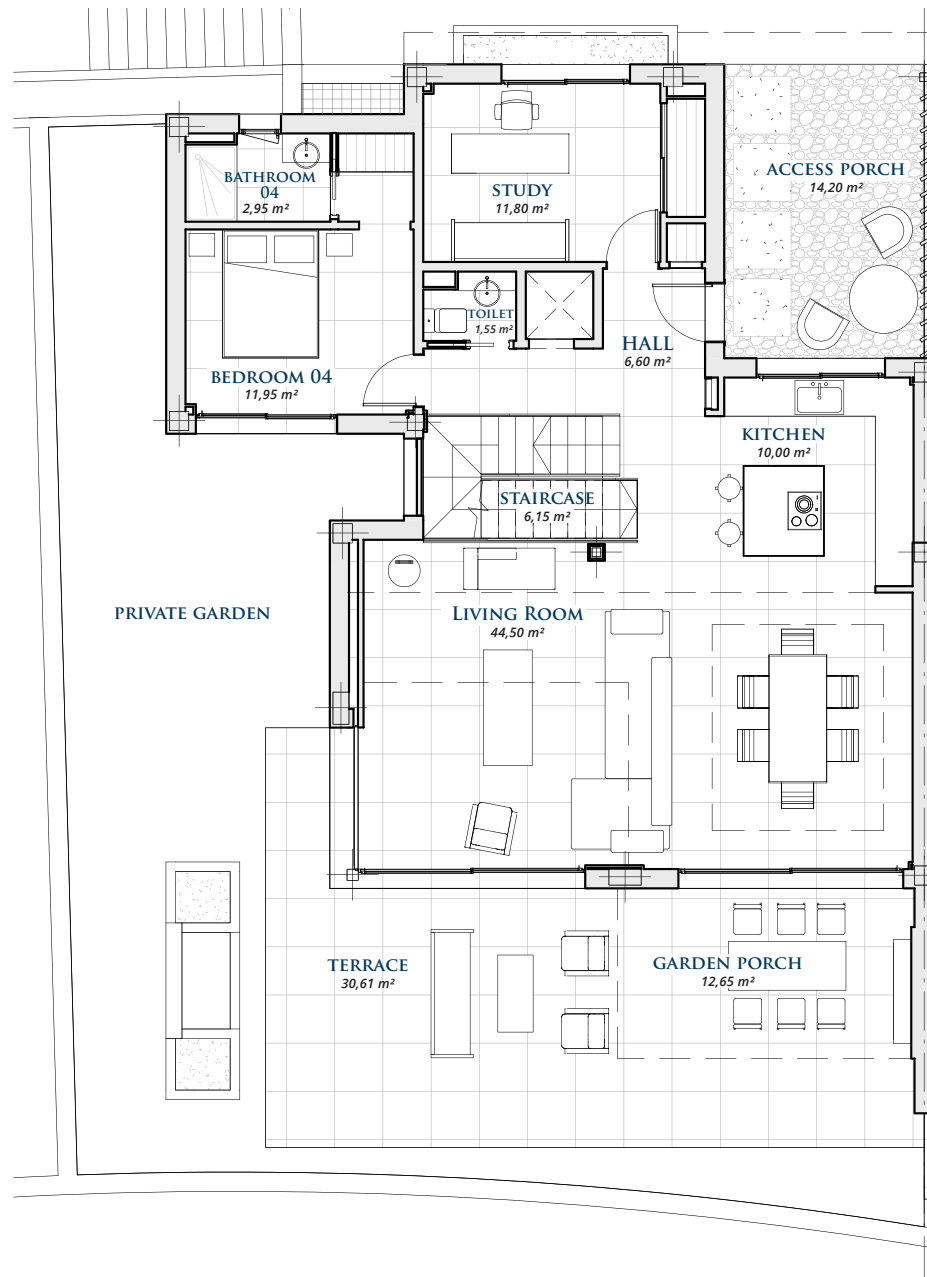
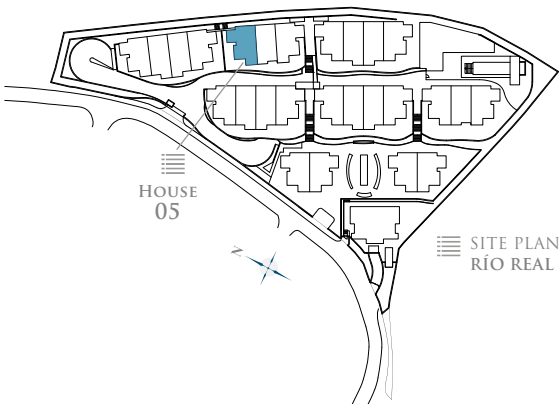
- RÍO REAL -

## 5

### FLOOR PLAN

## GROUND FLOOR

- HOUSE FIVE -



### GROUND FLOOR

Living Area 121,65 m<sup>2</sup>

Terrace 54,50 m<sup>2</sup>

TOTAL BUILT AREA: 176,15 m<sup>2</sup>

GRAPHIC SCALE 1:100





# THE LIST

SINGULAR HOMES

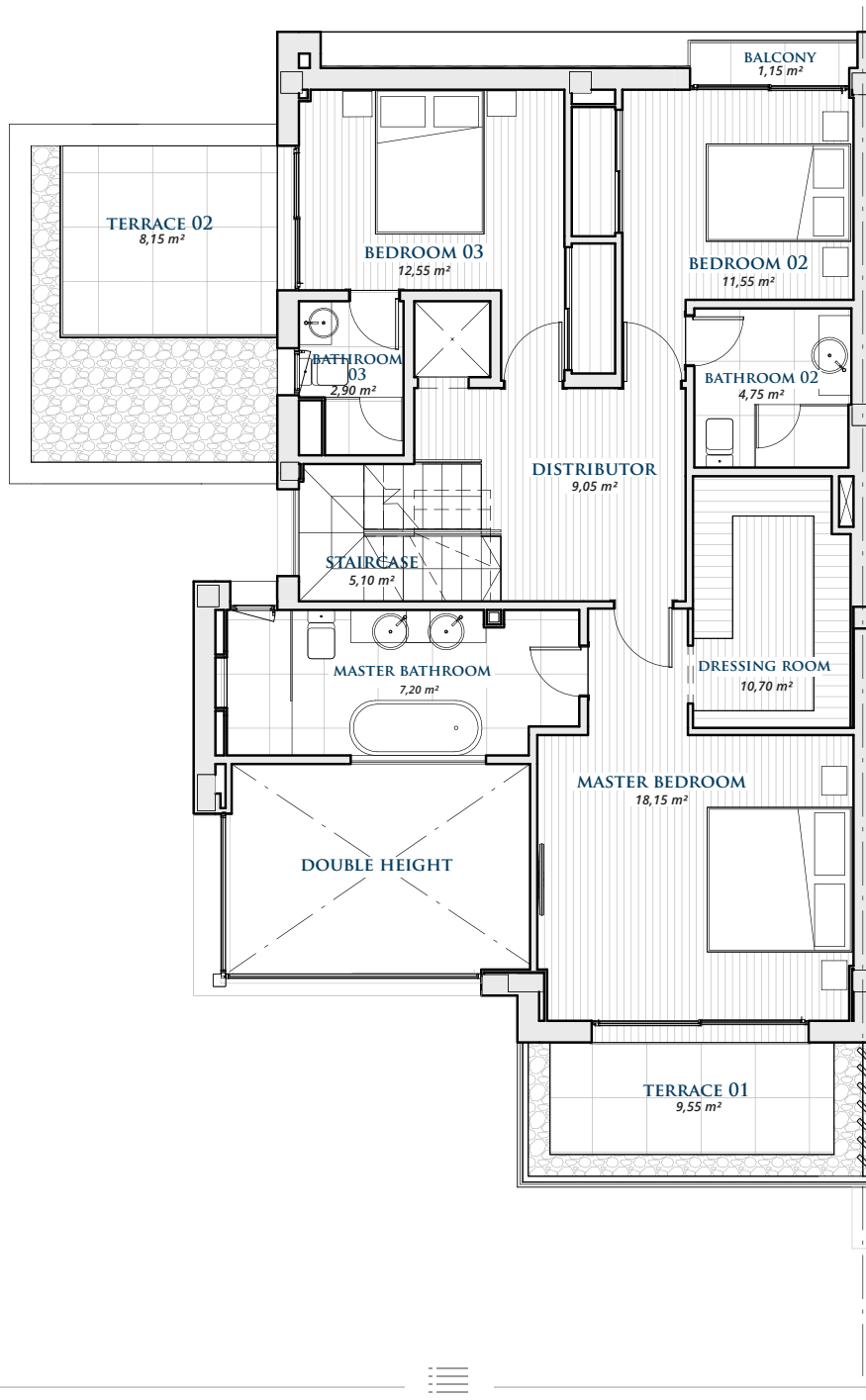
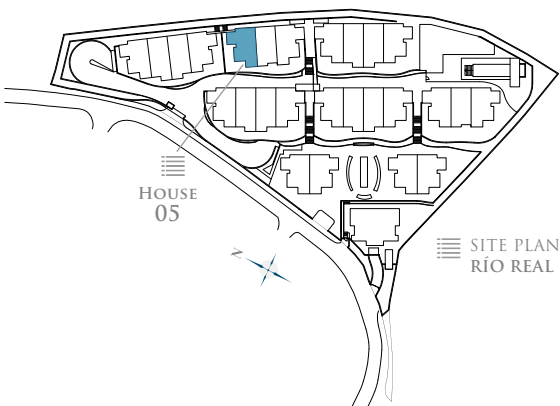
- RÍO REAL -

## 5

FLOOR PLAN

### FIRST FLOOR

- HOUSE FIVE -



#### FIRST FLOOR

Living Area 101,85 m<sup>2</sup>

Terrace 31,70 m<sup>2</sup>

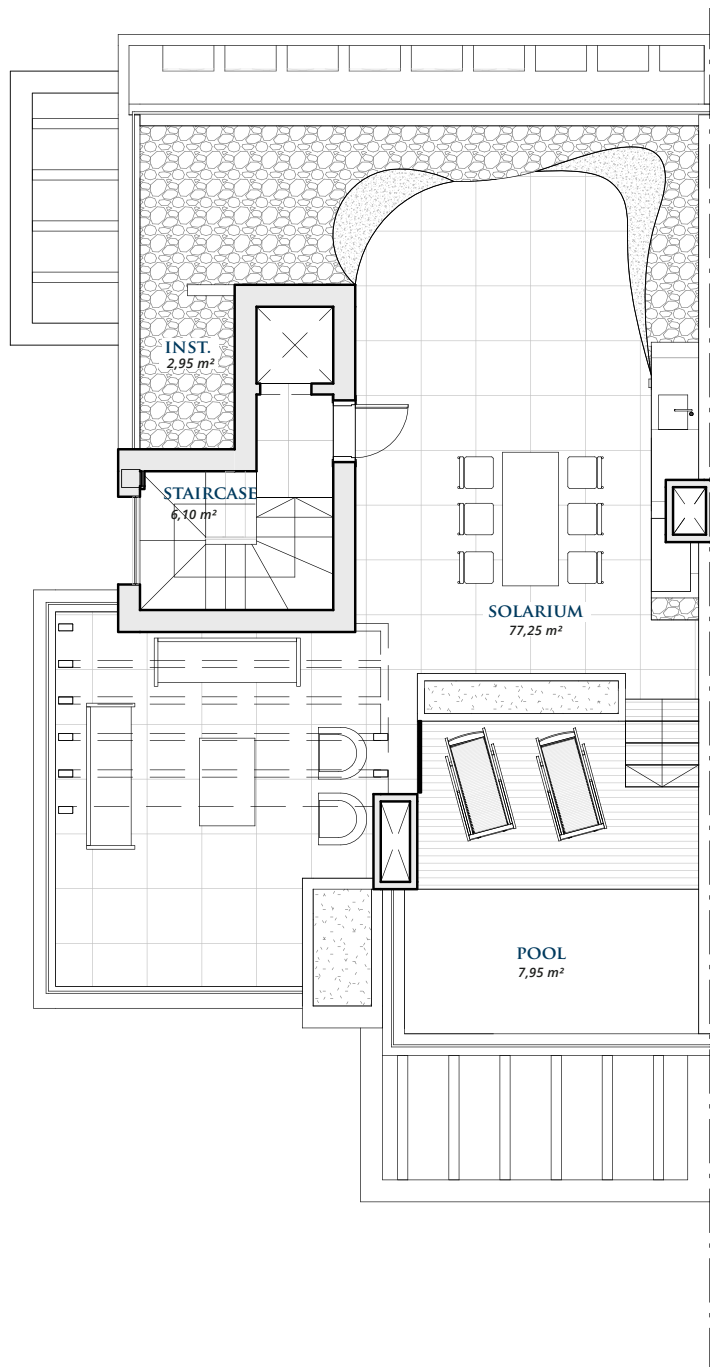
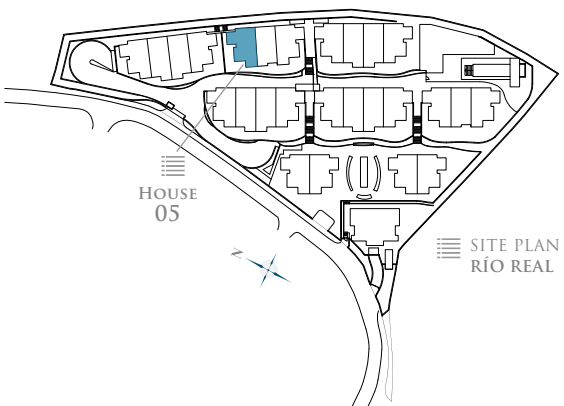
**TOTAL BUILT AREA: 133,55 m<sup>2</sup>**

GRAPHIC SCALE 1:100



5  
FLOOR PLAN

ROOF FLOOR  
- HOUSE FIVE -



ROOF FLOOR

Closed Area 11,75 m<sup>2</sup>

Terrace 105,45 m<sup>2</sup>

**TOTAL BUILT AREA: 117,20 m<sup>2</sup>**

GRAPHIC SCALE 1:100



- RÍO REAL -



THE LIST - RÍO REAL  
27 TOWNHOUSES PROJECT

The List Río Real is a complex made up of 27 townhouses which boast excellent quality finishes. The project will offer 2 types of semi-detached homes, with 4 and 5 bedrooms, spread over the basement, ground floor, and first floor. They also include a solarium with a private swimming pool, offering incredible sea views, tranquillity, and privacy.



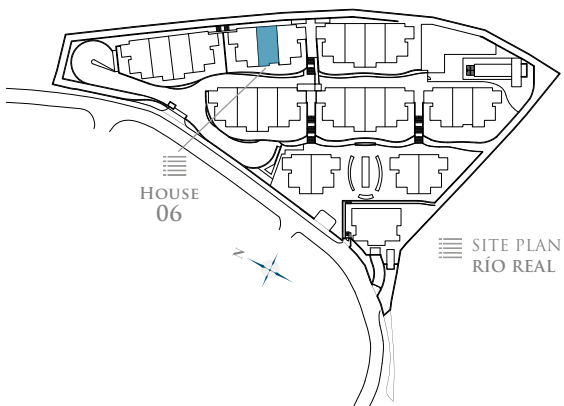
PARCELA: PA-RR-9.  
"LOMAS DEL POZUELO". MARBELLA  
TOTAL PLOT AREA: 11.973,45 m<sup>2</sup>

*·NOTE: This document is informative. The floor plans and areas expressed may undergo variations due to technical demands of the project. The furniture shown is not included being merely illustrative.*



6  
FLOOR PLAN

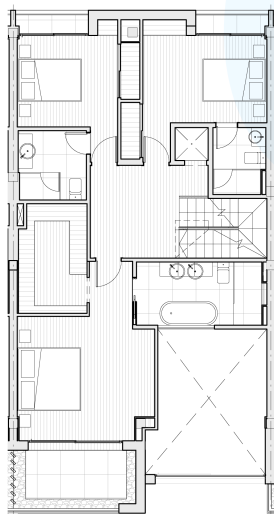
FLOORS  
- HOUSE SIX -



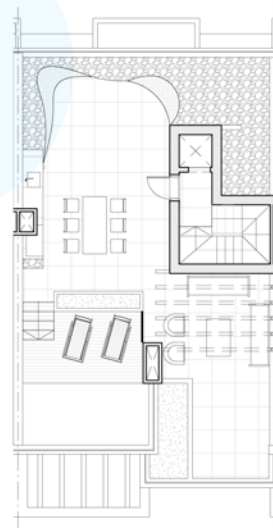
- BASEMENT -



- GROUND FLOOR -



- FIRST FLOOR -



- ROOF FLOOR -

TOTAL USEFUL AREA:  
**374,08 m<sup>2</sup>**

TOTAL USEFUL AREA  
ACCORDING TO RD 218/2005:  
**253,77 m<sup>2</sup>**

BUILT AREA

LIVING AREA 217,35 m<sup>2</sup>

TERRACES 157,43 m<sup>2</sup>

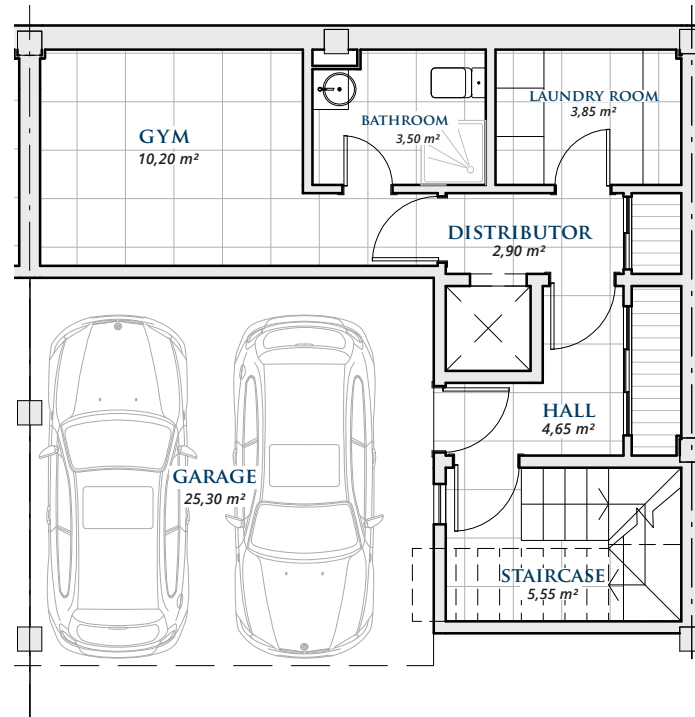
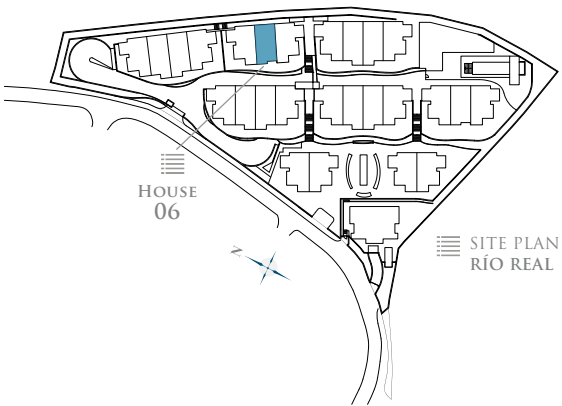
BASEMENT 63,32 m<sup>2</sup>

PRIVATE GARDEN 12,24 m<sup>2</sup>

TOTAL BUILT AREA: **438,10 m<sup>2</sup>**

6  
FLOOR PLAN

BASEMENT  
- HOUSE SIX -



BASEMENT

Basement	39,67 m <sup>2</sup>
Garage	23,65 m <sup>2</sup>
<b>TOTAL BUILT AREA:</b>	<b>63,32 m<sup>2</sup></b>

\* Basements are subject to modifications due to installation requirements.

GRAPHIC SCALE 1:100



# THE LIST

SINGULAR HOMES

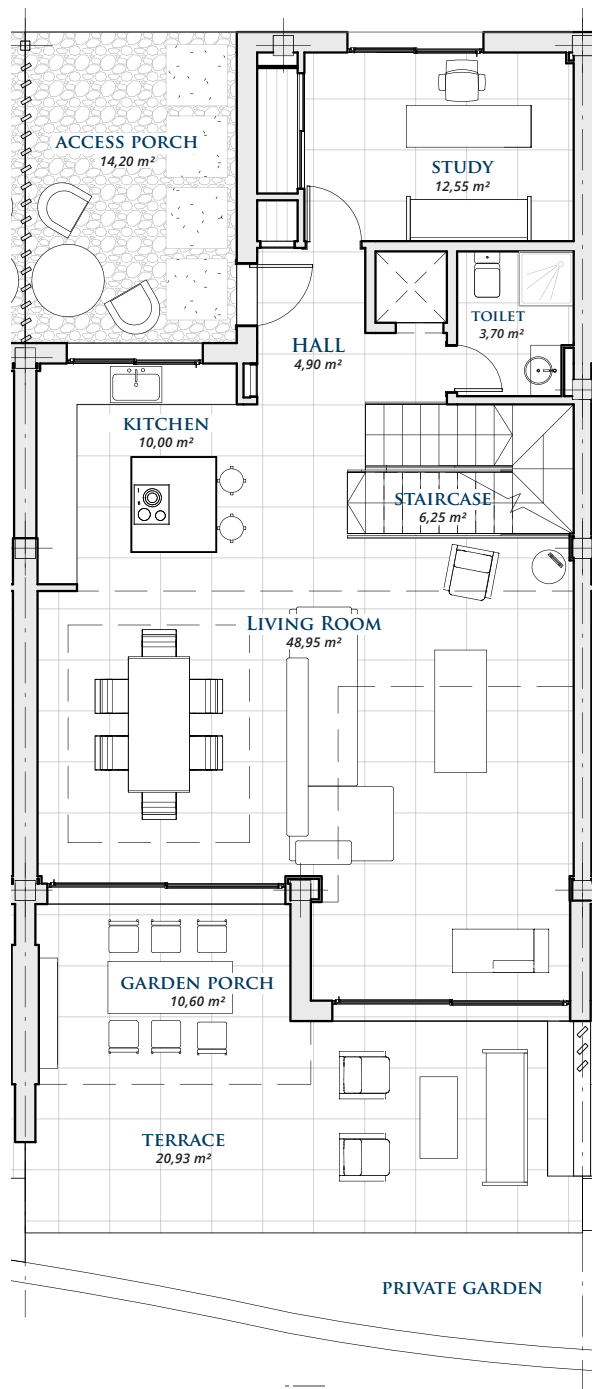
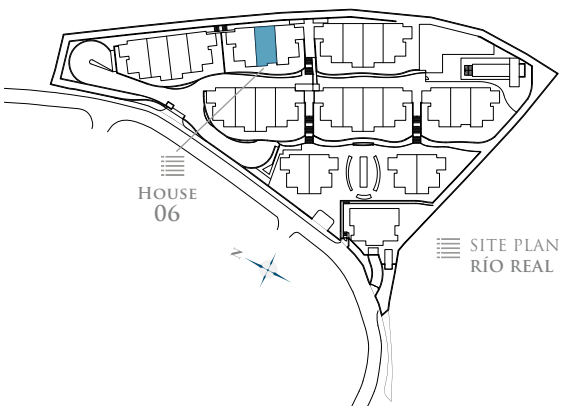
- RÍO REAL -

## 6

### FLOOR PLAN

## GROUND FLOOR

- HOUSE SIX -



### GROUND FLOOR

Living Area 105,35 m<sup>2</sup>

Terrace 42,93 m<sup>2</sup>

**TOTAL BUILT AREA: 148,28 m<sup>2</sup>**

GRAPHIC SCALE 1:100

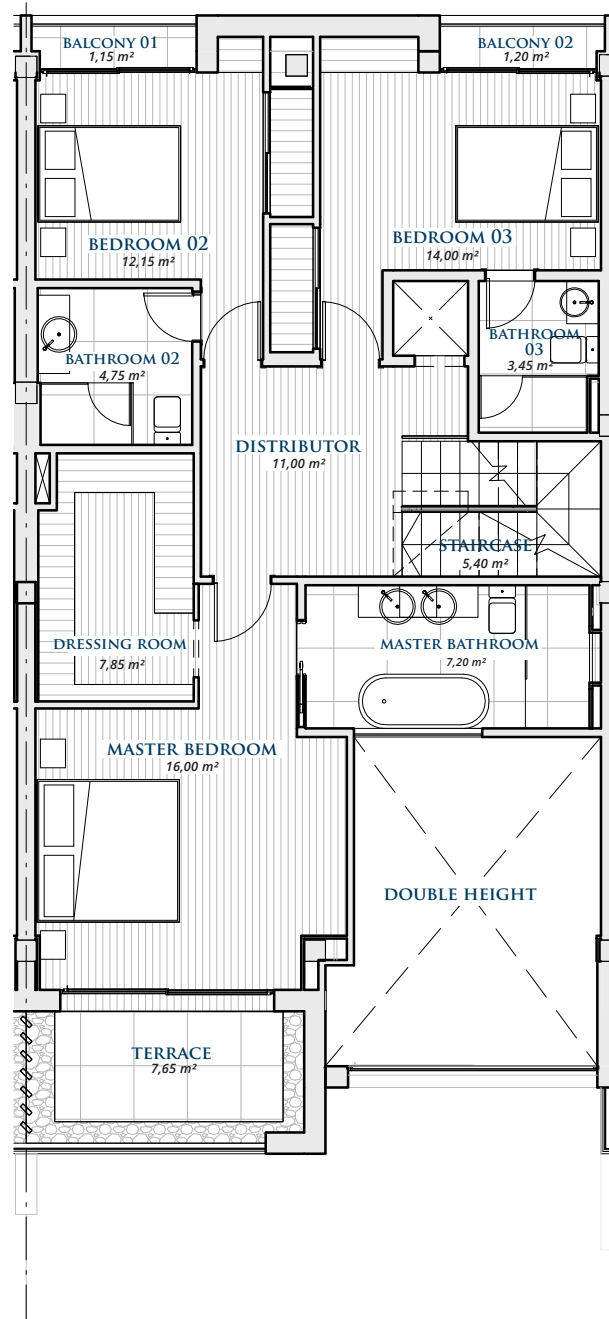
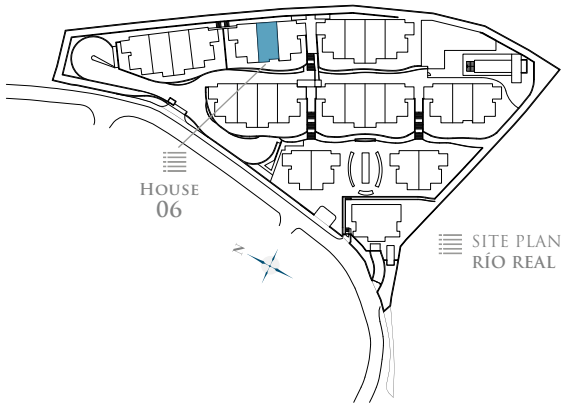


6

FLOOR PLAN

FIRST FLOOR

- HOUSE SIX -



FIRST FLOOR

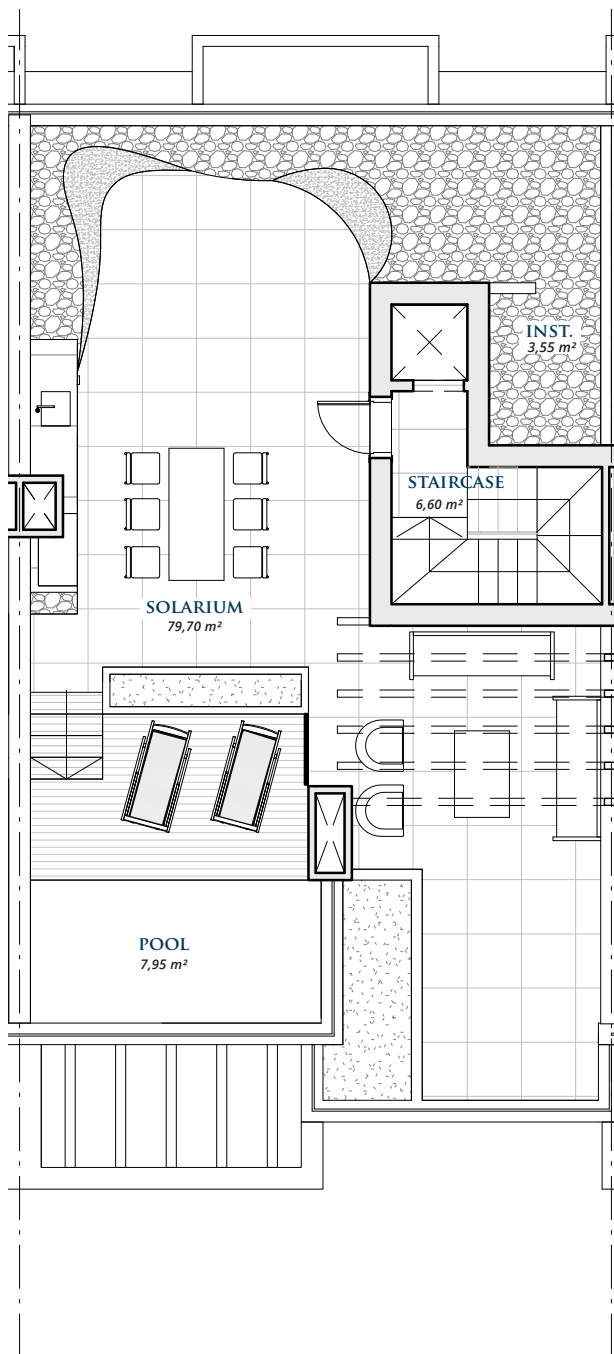
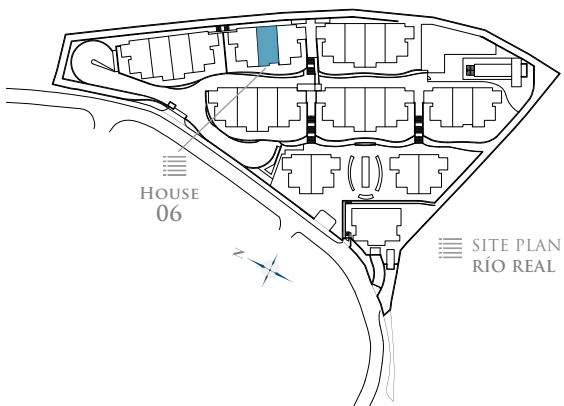
Living Area	100,00 m <sup>2</sup>
Terrace	10,50 m <sup>2</sup>
<b>TOTAL BUILT AREA:</b>	<b>110,50 m<sup>2</sup></b>

GRAPHIC SCALE 1:100



6  
FLOOR PLAN

ROOF FLOOR  
- HOUSE SIX -



ROOF FLOOR

Closed Area	12,00 m <sup>2</sup>
Terrace	104,00 m <sup>2</sup>
<b>TOTAL BUILT AREA:</b>	<b>116,00 m<sup>2</sup></b>

GRAPHIC SCALE 1:100



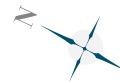


- RÍO REAL -



THE LIST - RÍO REAL  
27 TOWNHOUSES PROJECT

The List Río Real is a complex made up of 27 townhouses which boast excellent quality finishes. The project will offer 2 types of semi-detached homes, with 4 and 5 bedrooms, spread over the basement, ground floor, and first floor. They also include a solarium with a private swimming pool, offering incredible sea views, tranquillity, and privacy.



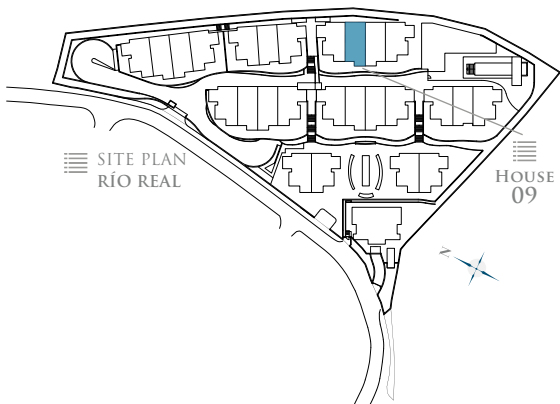
PARCELA: PA-RR-9.  
"LOMAS DEL POZUELO". MARBELLA  
TOTAL PLOT AREA: 11.973,45 m<sup>2</sup>

*·NOTE: This document is informative. The floor plans and areas expressed may undergo variations due to technical demands of the project. The furniture shown is not included being merely illustrative.*



9  
FLOOR PLAN

FLOORS  
- HOUSE NINE -



- BASEMENT -



- GROUND FLOOR -



- FIRST FLOOR -



- ROOF FLOOR -

TOTAL USEFUL AREA:  
**362,18 m<sup>2</sup>**

TOTAL USEFUL AREA  
ACCORDING TO RD 218/2005:  
**253,77 m<sup>2</sup>**

BUILT AREA

LIVING AREA	217,35 m <sup>2</sup>
TERRACES	145,80 m <sup>2</sup>
BASEMENT	63,32 m <sup>2</sup>
PRIVATE GARDEN	19,84 m <sup>2</sup>
<b>TOTAL BUILT AREA:</b>	<b>426,47 m<sup>2</sup></b>

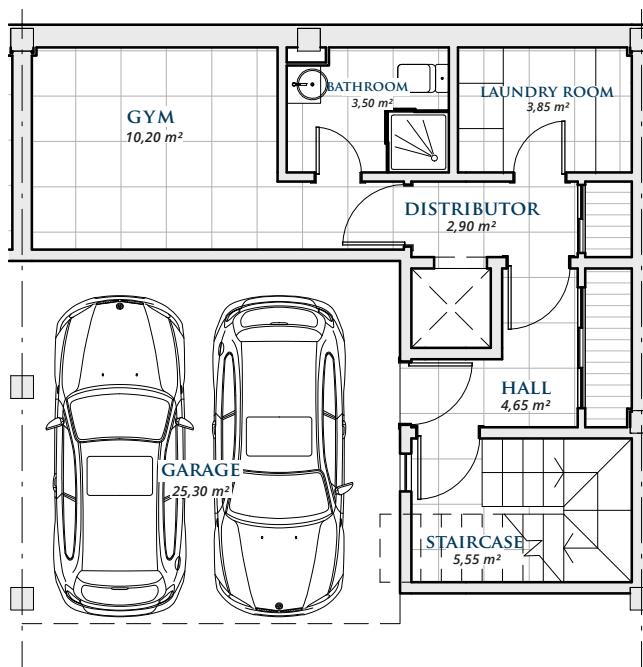
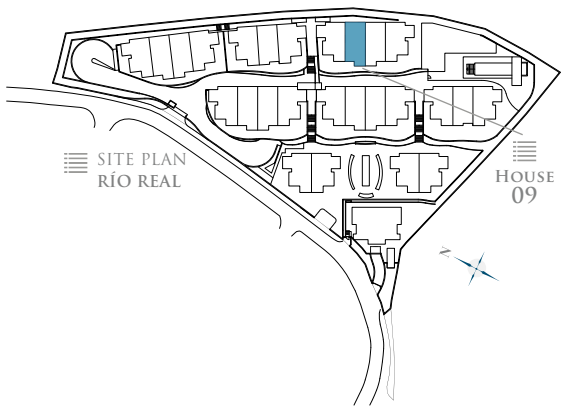


9

FLOOR PLAN

BASEMENT

- HOUSE NINE -



BASEMENT

Basement 39,67 m<sup>2</sup>

Garage 23,65 m<sup>2</sup>

**TOTAL BUILT AREA: 63,32 m<sup>2</sup>**

\* Basements are subject to modifications due to installation requirements.

GRAPHIC SCALE 1:100



# THE LIST

SINGULAR HOMES

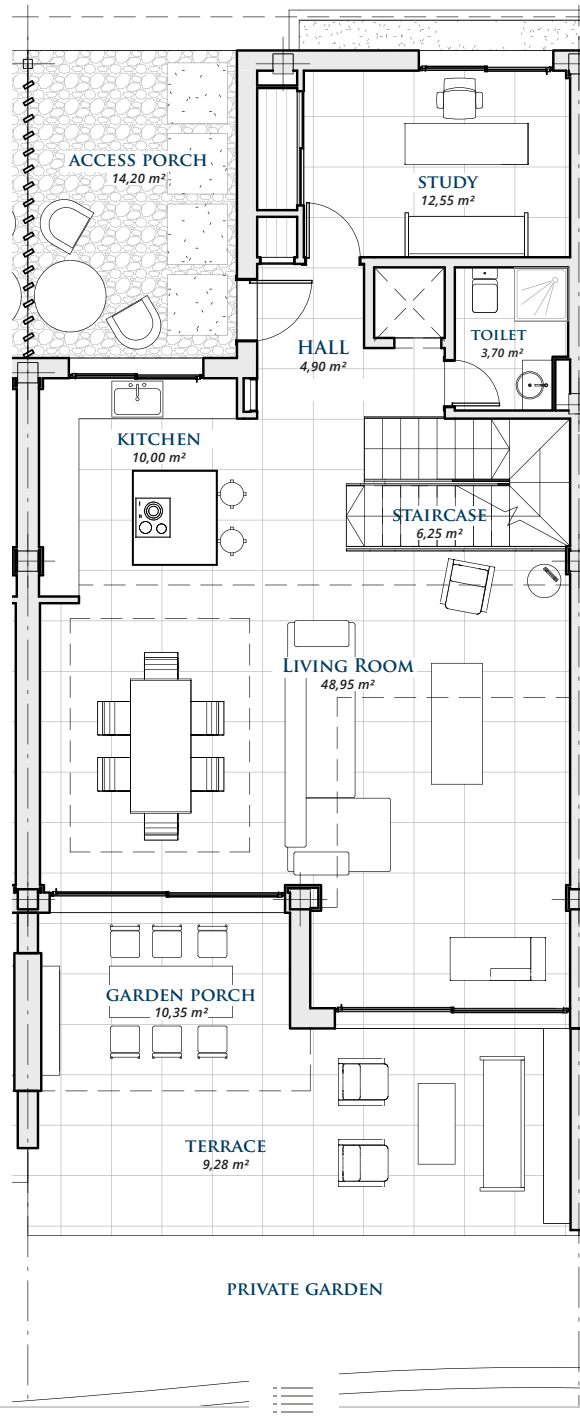
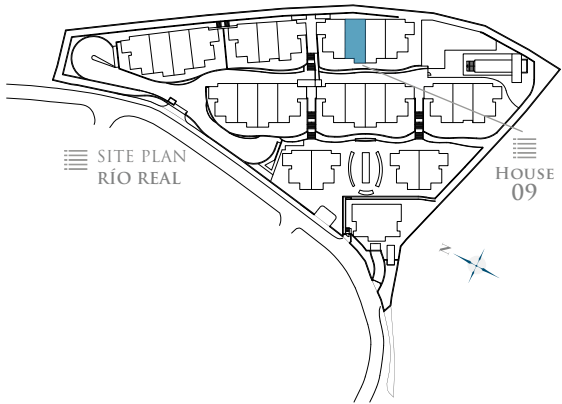
- RÍO REAL -

## 9

### FLOOR PLAN

## GROUND FLOOR

- HOUSE NINE -



### GROUND FLOOR

Living Area 105,35 m<sup>2</sup>

Terrace 31,30 m<sup>2</sup>

**TOTAL BUILT AREA: 136,65 m<sup>2</sup>**

GRAPHIC SCALE 1:100



# THE LIST

SINGULAR HOMES

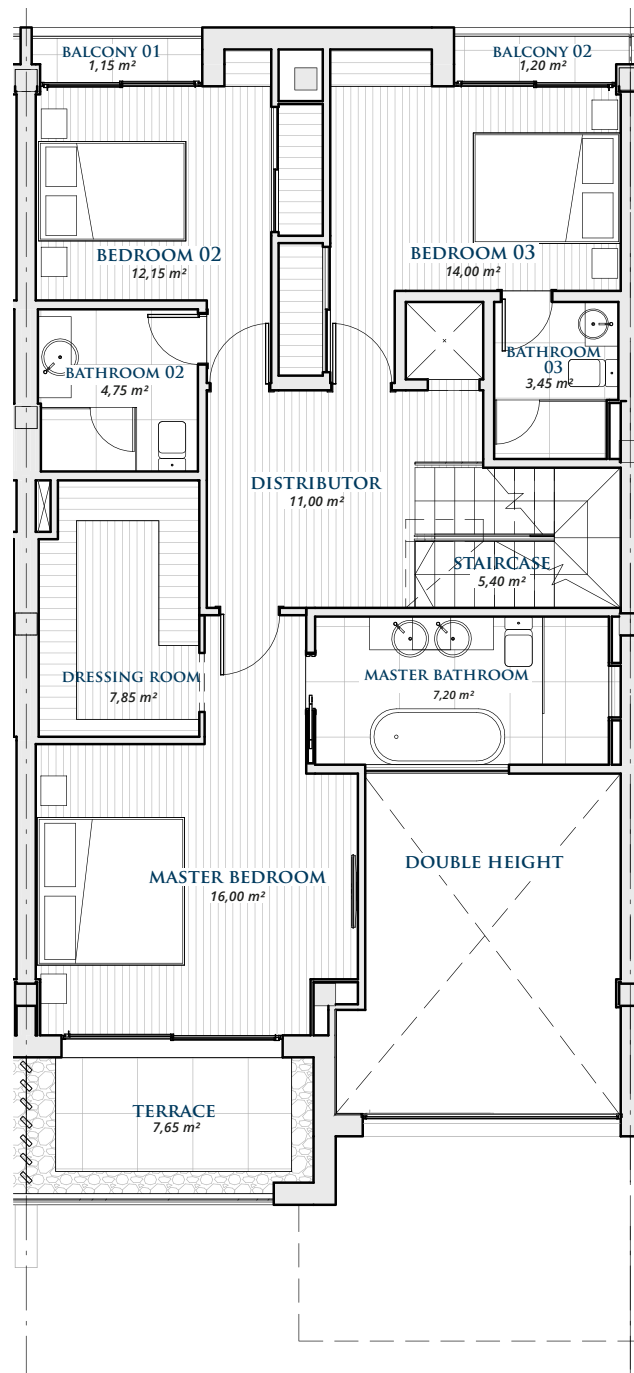
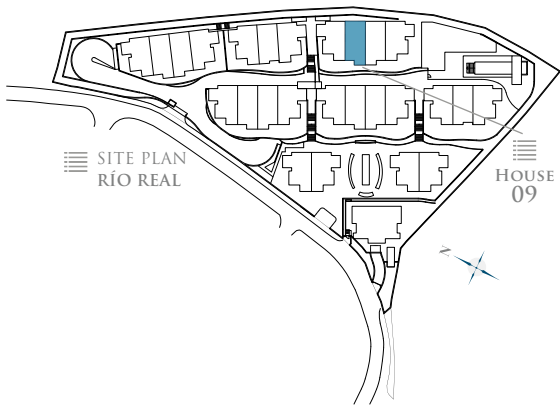
- RÍO REAL -

## 9

### FLOOR PLAN

### FIRST FLOOR

- HOUSE NINE -



### FIRST FLOOR

Living Area 100,00 m<sup>2</sup>

Terrace 10,5 m<sup>2</sup>

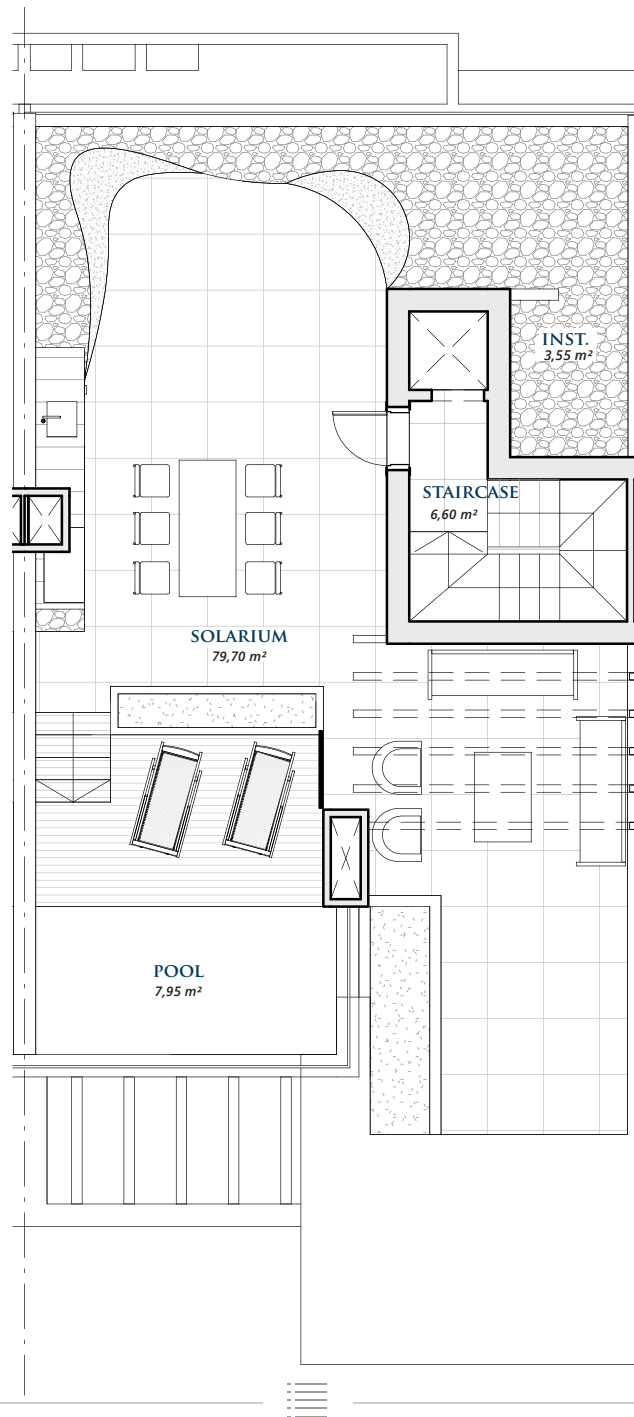
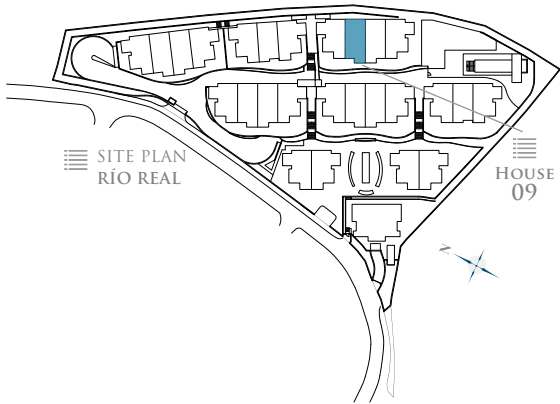
**TOTAL BUILT AREA: 110,50 m<sup>2</sup>**

GRAPHIC SCALE 1:100



9  
FLOOR PLAN

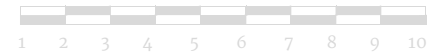
ROOF FLOOR  
- HOUSE NINE -



ROOF FLOOR

Closed Area	12,00 m <sup>2</sup>
Terrace	104,00 m <sup>2</sup>
<b>TOTAL BUILT AREA:</b>	<b>116,00 m<sup>2</sup></b>

GRAPHIC SCALE 1:100

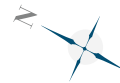


- RÍO REAL -



THE LIST - RÍO REAL  
27 TOWNHOUSES PROJECT

The List Río Real is a complex made up of 27 townhouses which boast excellent quality finishes. The project will offer 2 types of semi-detached homes, with 4 and 5 bedrooms, spread over the basement, ground floor, and first floor. They also include a solarium with a private swimming pool, offering incredible sea views, tranquillity, and privacy.



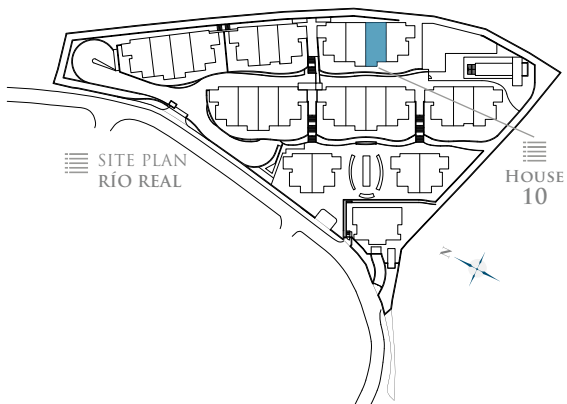
PARCELA: PA-RR-9.  
"LOMAS DEL POZUELO". MARBELLA  
TOTAL PLOT AREA: 11.973,45 m<sup>2</sup>

*·NOTE: This document is informative. The floor plans and areas expressed may undergo variations due to technical demands of the project. The furniture shown is not included being merely illustrative.*



10  
FLOOR PLAN

FLOORS  
- HOUSE TEN -



- BASEMENT -



- GROUND FLOOR -



- FIRST FLOOR -



- ROOF FLOOR -

TOTAL USEFUL AREA:  
**362,30 m<sup>2</sup>**

TOTAL USEFUL AREA  
ACCORDING TO RD 218/2005:  
**253,77 m<sup>2</sup>**

BUILT AREA

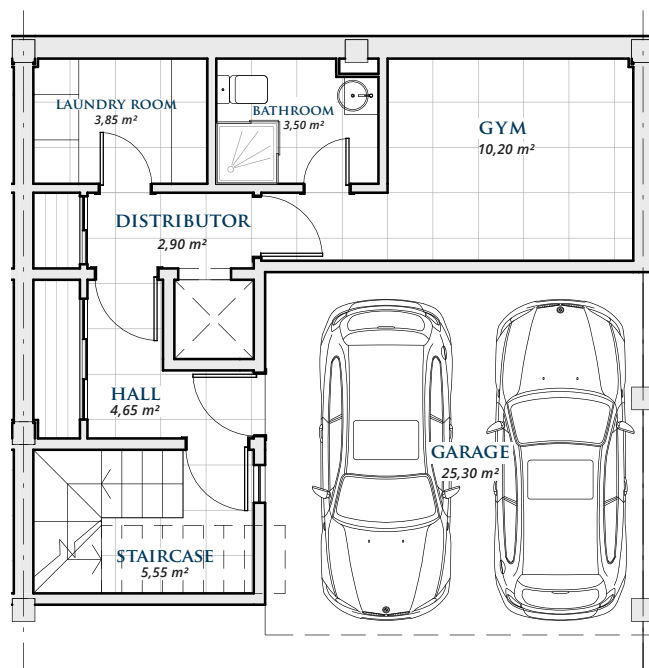
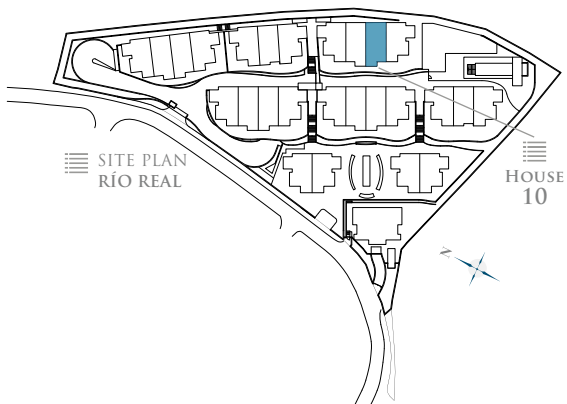
LIVING AREA	217,35 m <sup>2</sup>
TERRACES	145,80 m <sup>2</sup>
BASEMENT	63,32 m <sup>2</sup>
PRIVATE GARDEN	20,43 m <sup>2</sup>
<b>TOTAL BUILT AREA:</b>	<b>426,47 m<sup>2</sup></b>





10  
FLOOR PLAN

BASEMENT  
- HOUSE TEN -



BASEMENT

Basement	39,67 m <sup>2</sup>
Garage	23,65 m <sup>2</sup>
<b>TOTAL BUILT AREA:</b>	<b>63,32 m<sup>2</sup></b>

\* Basements are subject to modifications due to installation requirements.

GRAPHIC SCALE 1:100



# THE LIST

SINGULAR HOMES

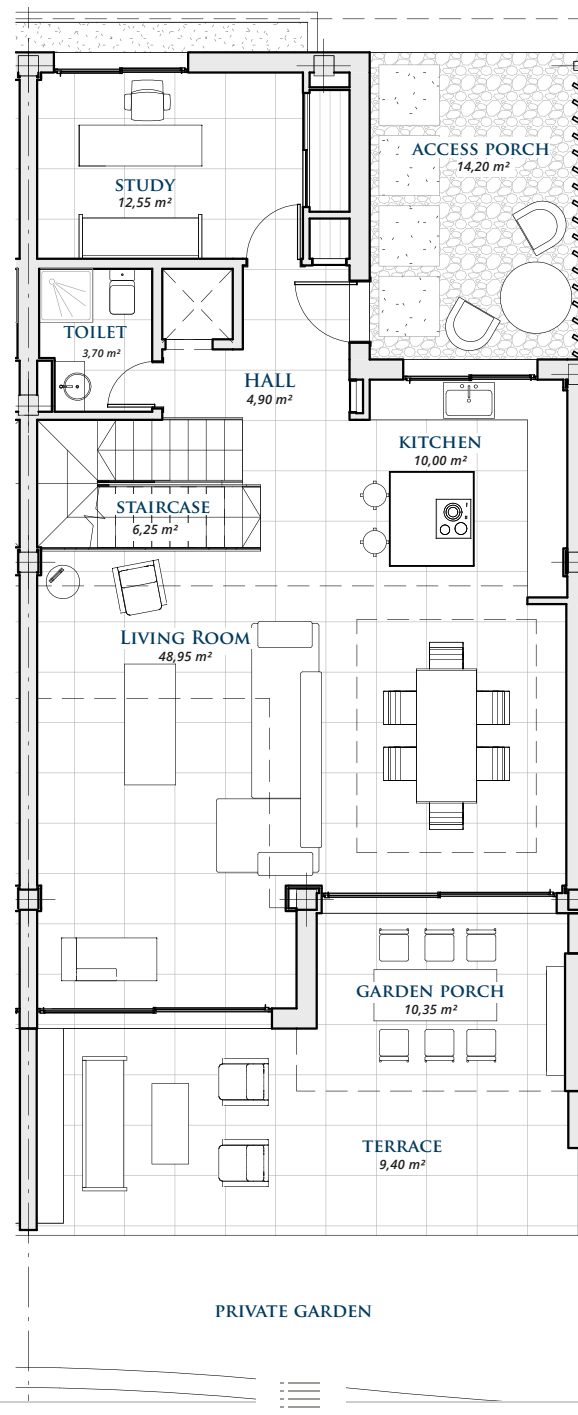
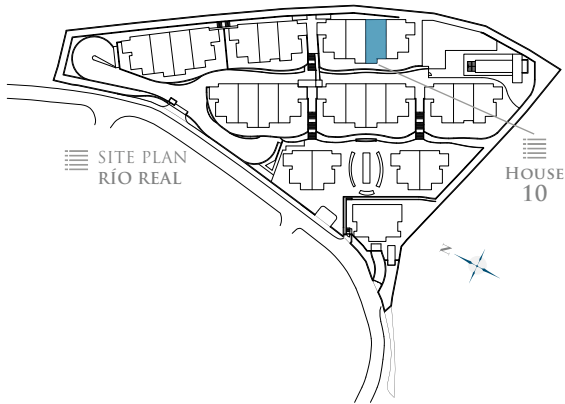
- RÍO REAL -

## 10

### FLOOR PLAN

## GROUND FLOOR

- HOUSE TEN -



### GROUND FLOOR

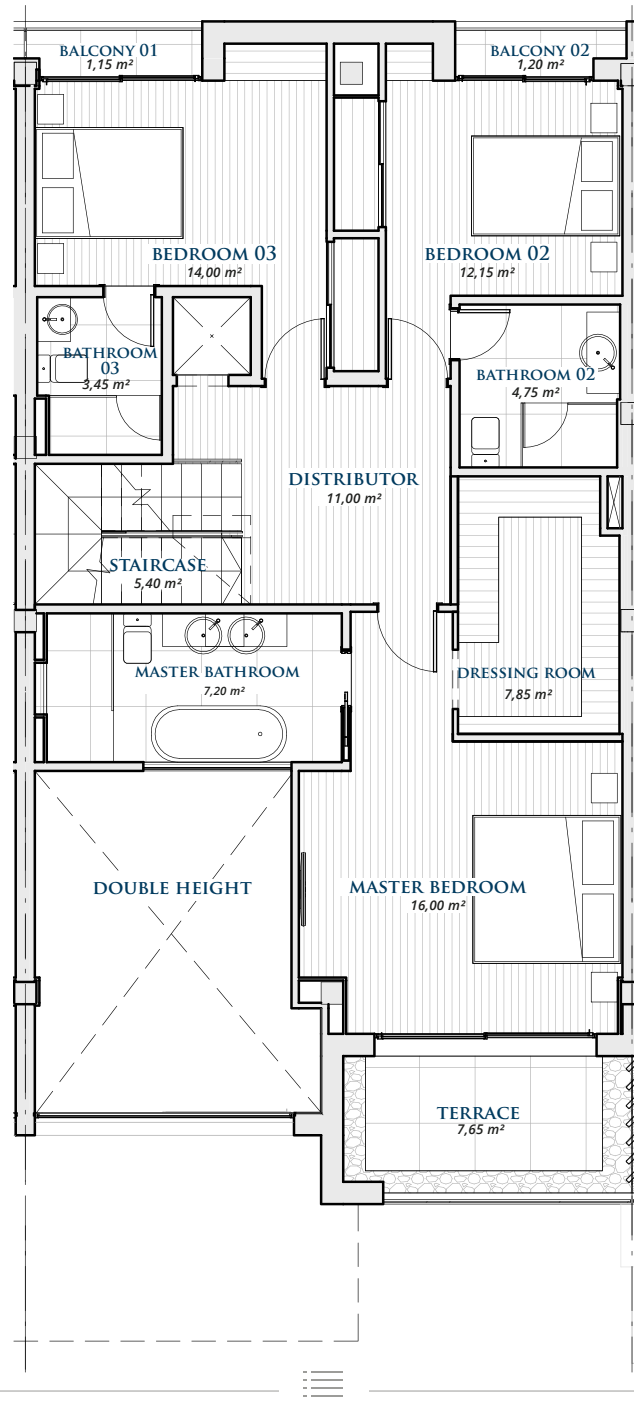
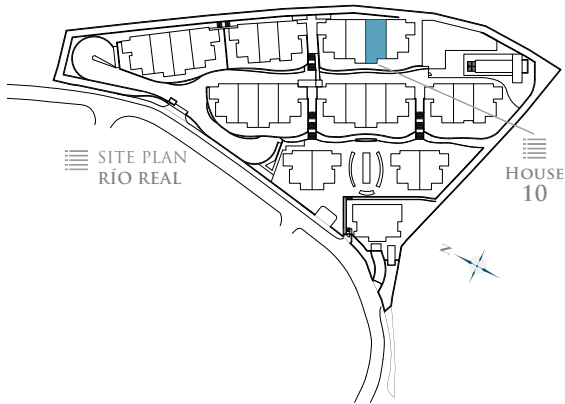
Living Area	105,35 m <sup>2</sup>
Terrace	31,30 m <sup>2</sup>
<b>TOTAL BUILT AREA:</b>	<b>136,65 m<sup>2</sup></b>

GRAPHIC SCALE 1:100



10  
FLOOR PLAN

FIRST FLOOR  
- HOUSE TEN -



FIRST FLOOR

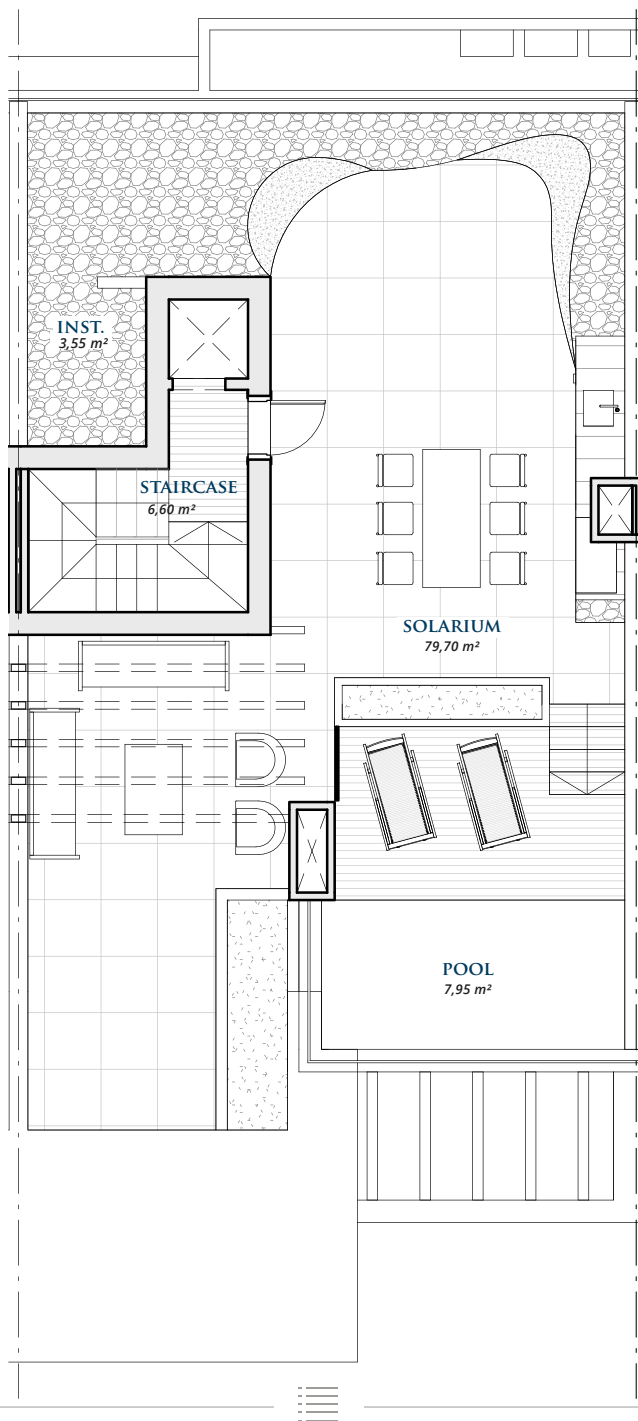
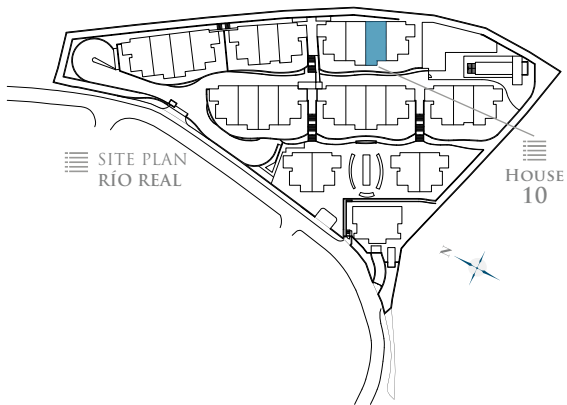
Living Area	100,00 m <sup>2</sup>
Terrace	10,5 m <sup>2</sup>
<b>TOTAL BUILT AREA:</b>	<b>110,50 m<sup>2</sup></b>

GRAPHIC SCALE 1:100



10  
FLOOR PLAN

ROOF FLOOR  
- HOUSE TEN -



ROOF FLOOR

Closed Area	12,00 m <sup>2</sup>
Terrace	104,00 m <sup>2</sup>
<b>TOTAL BUILT AREA:</b>	<b>116,00 m<sup>2</sup></b>

GRAPHIC SCALE 1:100

