



Any information, photographs, maps, plans, descriptions and visualisations used in the marketing materials are provided for illustrative purposes only and shall not be interpreted as a guarantee of a specific view or views. The views described represent 'as is' static views of the natural features and may be subject to changes caused by natural phenomena and/or human intervention. The plans of the project are not drawn to scale and the final designs may be subject to change.

5TH FLOOR

- 3-BEDROOMS PENTHOUSE
- 3-BEDROOMS
- 2-BEDROOMS
- 1-BEDROOM

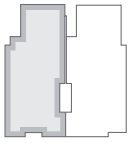


A DEVELOPMENT BY



CRESTON HOLDING
CRESTON HOLDING LTD.

Any information, photographs, maps, plans, descriptions and visualisations used in the marketing materials are provided for illustrative purposes only and shall not be interpreted as a guarantee of a specific view or views. The views described represent 'as is' static views of the natural features and may be subject to changes caused by natural phenomena and/or human intervention. The plans of the project are not drawn to scale and the final designs may be subject to change.



3-BED
TYPE PH3

Internal area : 141 m²
External area : 142 m²
Total area : 283 m²

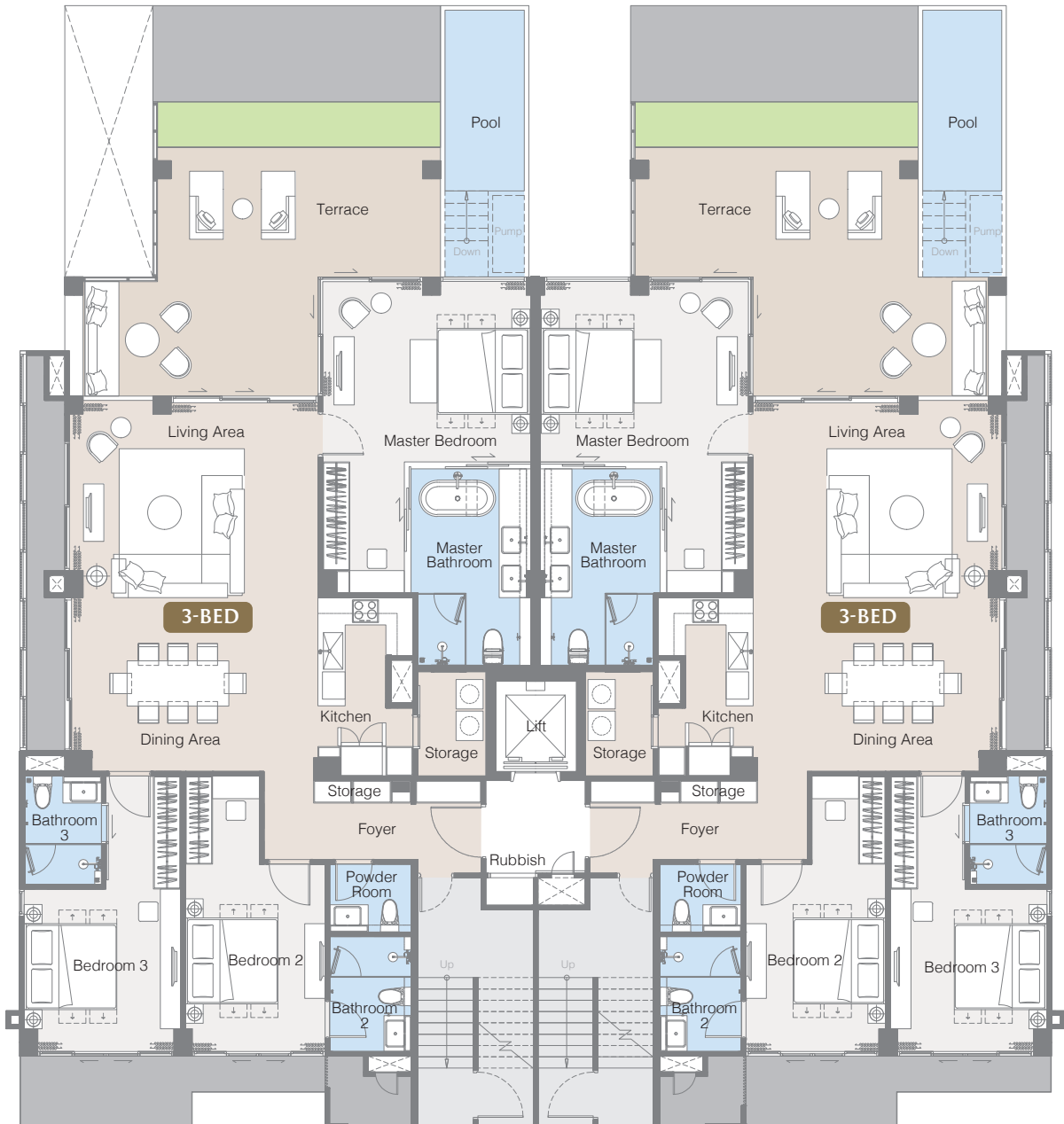
- 3-bedrooms
- 3.5-bathrooms
- Living area
- Private pool
- Private terrace
- Private rooftop

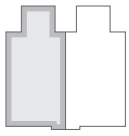


3-BED
TYPE PH4

Internal area : 141 m²
External area : 142 m²
Total area : 283 m²

- 3-bedrooms
- 3.5-bathrooms
- Living area
- Private pool
- Private terrace
- Private rooftop

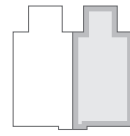




3-BED
TYPE PH3

Internal area : 141 m²
External area : 142 m²
Total area : 283 m²

- 3-bedrooms
- 3.5-bathrooms
- Living area
- Private pool
- Private terrace
- Private rooftop



3-BED
TYPE PH4

Internal area : 141 m²
External area : 142 m²
Total area : 283 m²

- 3-bedrooms
- 3.5-bathrooms
- Living area
- Private pool
- Private terrace
- Private rooftop

