



CANAPAYA
RESIDENCES

888 Rama III, Bangkok



Experience the height of riverfront living.

CANAPAYA RESIDENCES

888 Rama III Road

An exclusive freehold riverfront condominium situated by the Chao Phraya River on Rama III Road.

The award-winning iconic landmark is designed for all the exclusive 168 residential units to enjoy the magnificent views of the river with state-of-the-art facilities and concierge services.

Reasons to make CANAPAYA RESIDENCES

Your Perfect Home.

- ✦ A luxury freehold riverfront condominium offering unimpeded views of the magnificent Chao Phraya River in an enviable location.
- ✦ Convenient location on Rama III Road, with easy access to 3 expressway entrances and exits.
- ✦ Just 5 minutes by car from Sathorn's Central Business District and located only moments away from two of the best international schools in Bangkok, King's College International School and Shrewsbury International School.
- ✦ Ultimate privacy with low density design, offering only 168 units and ample car parking spaces of 140% of the units.
- ✦ Equipped with spacious and functional common facilities, including an infinity pool located on the 50th floor with stunning panoramic river views, clubhouse, fitness facilities, dance studio, music room, spa & salon, outdoor jogging track, basketball court, golf putting greens, and multiple co-working spaces.
- ✦ Pet-friendly – various dedicated amenities for your beloved four-legged friends, including a rooftop pet leisure park and pet grooming/shower facilities.
- ✦ Top of the class concierge services to cater to residents' every day-to-day needs.
- ✦ Designed to harmonize with Chinese Fengshui and boasts the prestigious home address of 888 Rama III Road.



True conveniences on an auspicious location

Inspired by the exquisite river view and the vibrancy of Bangkok city, CANAPAYA RESIDENCES embodies the serenity and tranquility of a riverside resort while promises the conveniences and comforts of the city.

Besides the convenient location, CANAPAYA RESIDENCES is situated at the most auspicious location of all, the *belly of the dragon* of the Chao Phraya. The belly, which symbolizes security, is considered a place of great prosperity – *a place where life can grow and prosper*.

5 minutes to Sathorn-Silom CBD

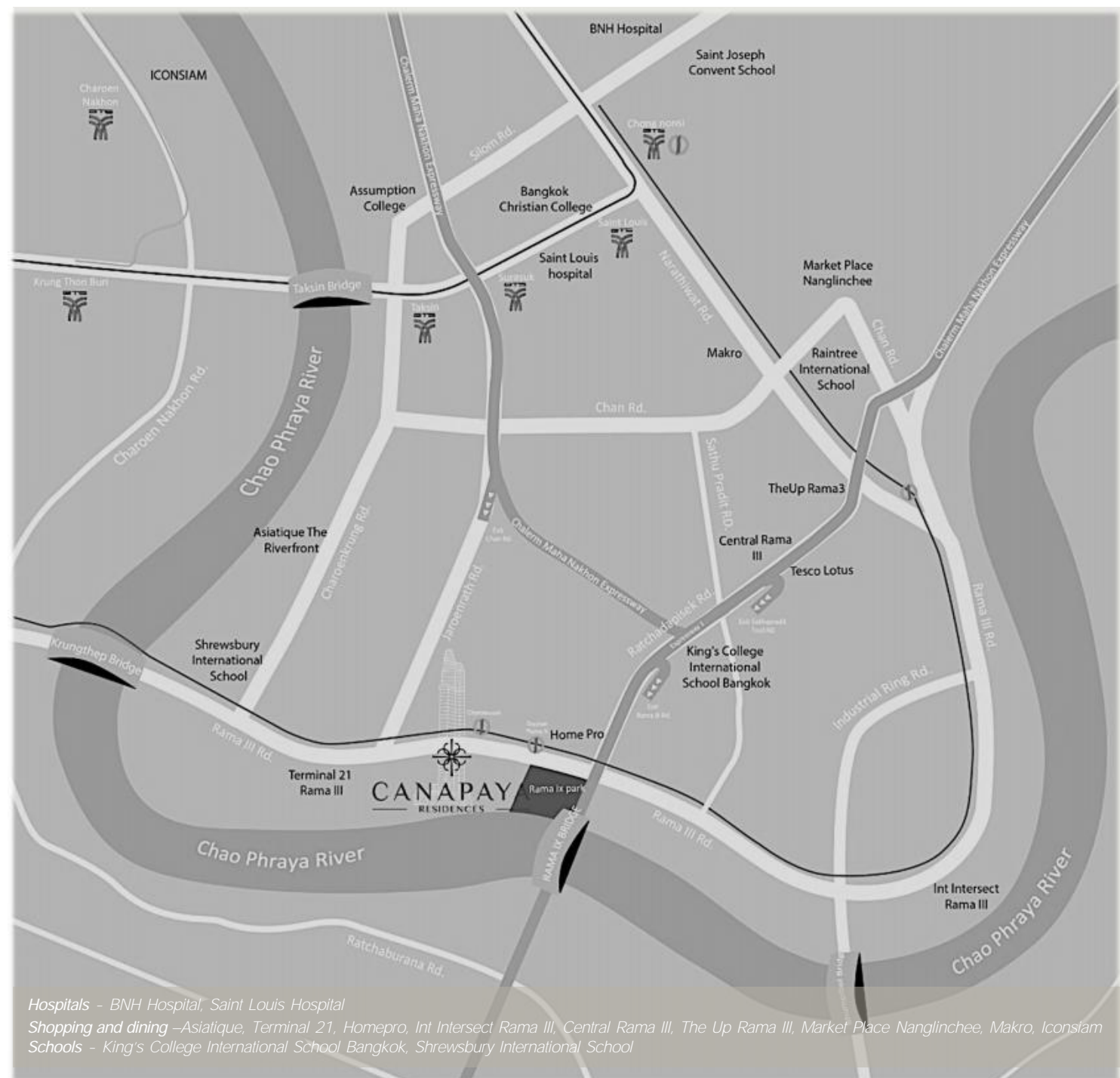
10 minutes to Asoke- Sukhumvit area

Surrounded by 3 expressway entrances and exits

Moments away from two of Thailand's top international schools

A minute away from Terminal 21 Rama III shopping center

and walking-distance from one of Bangkok's few public parks



Hospitals - BNH Hospital, Saint Louis Hospital

Shopping and dining - Asiatique, Terminal 21, Homepro, Int Intersect Rama III, Central Rama III, The Up Rama III, Market Place Nanglinchee, Makro, Iconsiam

Schools - King's College International School Bangkok, Shrewsbury International School



Besides the auspicious location, the 888 house number of CANAPAYA RESIDENCES, which the ancient Chinese believe to be the most auspicious number of all, symbolizing wealth, prosperity, and abundance, is destined to bring and attract triple infinite fortune and success to those residing at the Residences.






AN EXQUISITE RIVERSIDE SANCTUARY

with uncompromised privacy

By the principles of *feng shui*, the ancient Chinese philosophy that interprets the influence of our surrounding environment, CANAPAYA RESIDENCES is located on a prime property. The residence's riverfront location provides water flowing at its base and an energizing breeze from the South, and sits at the foot of a veritable mountain in the form of Bangkok's Central Business District. When such auspicious circumstances align, a location is believed to be harmoniously balanced thereby exuding security, peace, and positive *Qi* (energy).



“You can’t be unhappy in the
middle of a big, beautiful river.”

- Jim Harisson



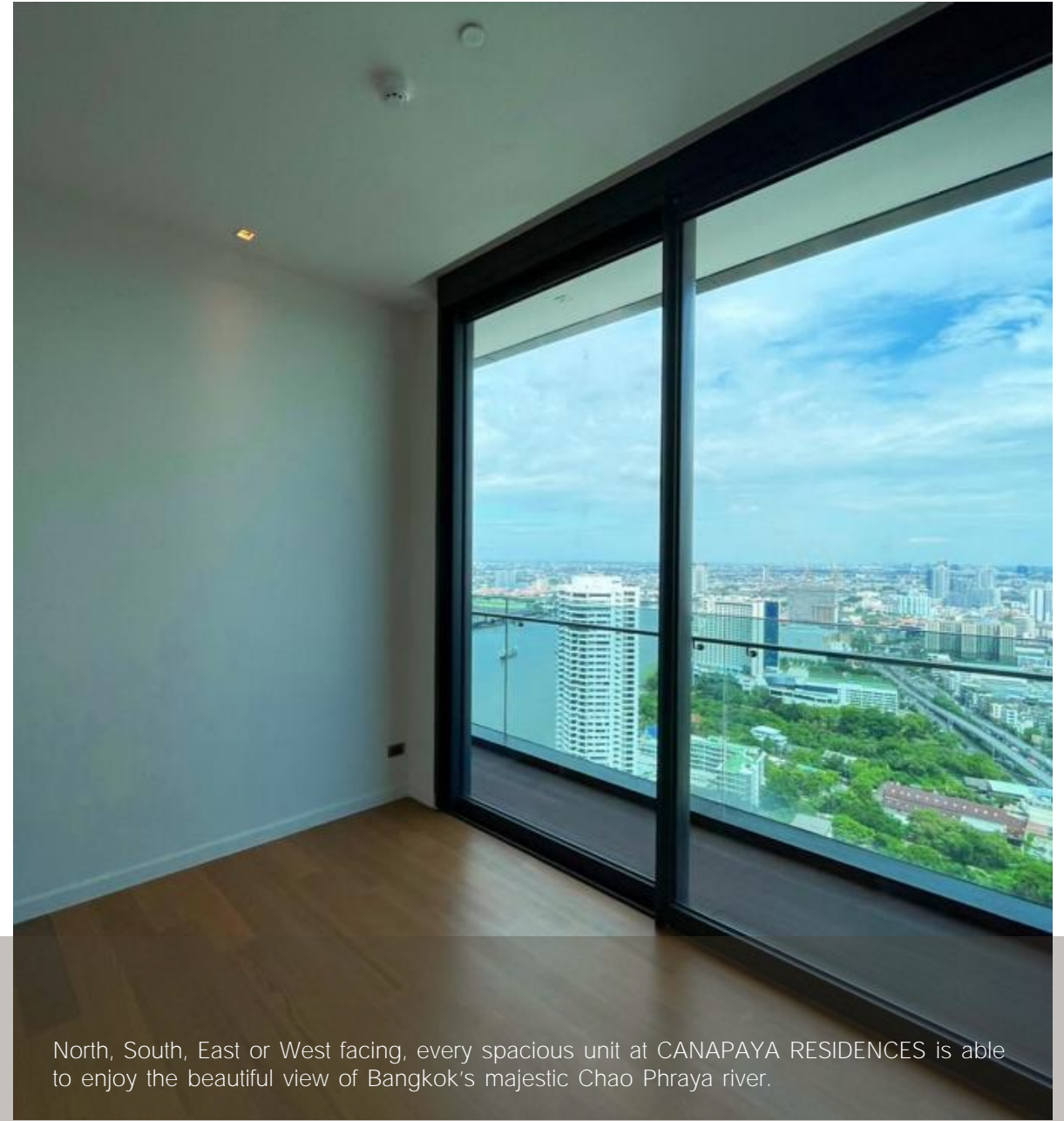


AIRY INTERIOR SPACE DESIGNED TO MATCH THE ENDLESS RIVER VIEWS

Each residence has a floor-to-ceiling height of an impressive three meters and large panoramic windows, allowing incredible sunlight to seep through from dusk till dawn.

Ultimate privacy and low-density design - only 168 exclusive units, an average of 4 units per floor.





North, South, East or West facing, every spacious unit at CANAPAYA RESIDENCES is able to enjoy the beautiful view of Bangkok's majestic Chao Phraya river.



VARIOUS AMENITIES AND FACILITIES FOR RESIDENTS TO ENJOY

Equipped with a river lounge, state-of-the-art gym and fitness facilities, steam and sauna, yoga studio, a riverside-pool that overlooks Bangkok's beautiful sunset.

Not to mention the outdoor jogging track, co-working spaces, a riverside rooftop, a half-court basketball court, children's playground, and a private pier.

Our residences is also only a walking distance away from one of Bangkok's few public parks, a perfect place for those who enjoys a morning jog surrounded by lush greenery before a start to their day.





Basketball court



Recreational dog park



Riverside putting green





SECURITY

Sophistication made simple

Gone are the days residents will be required to carry around a keycard. At CANAPAYA RESIDENCES, the advanced facial scanning technology allows residents to access their floor and parking area with ease.





Project Details

Type of Ownership	Freehold
Project Area	4-0-51 rai
Units	168 units
Floors	57 floors
Parking Spaces	265 cars
Year of Completion	2019 (ready to move in)
Pets Policy	Pet-friendly



