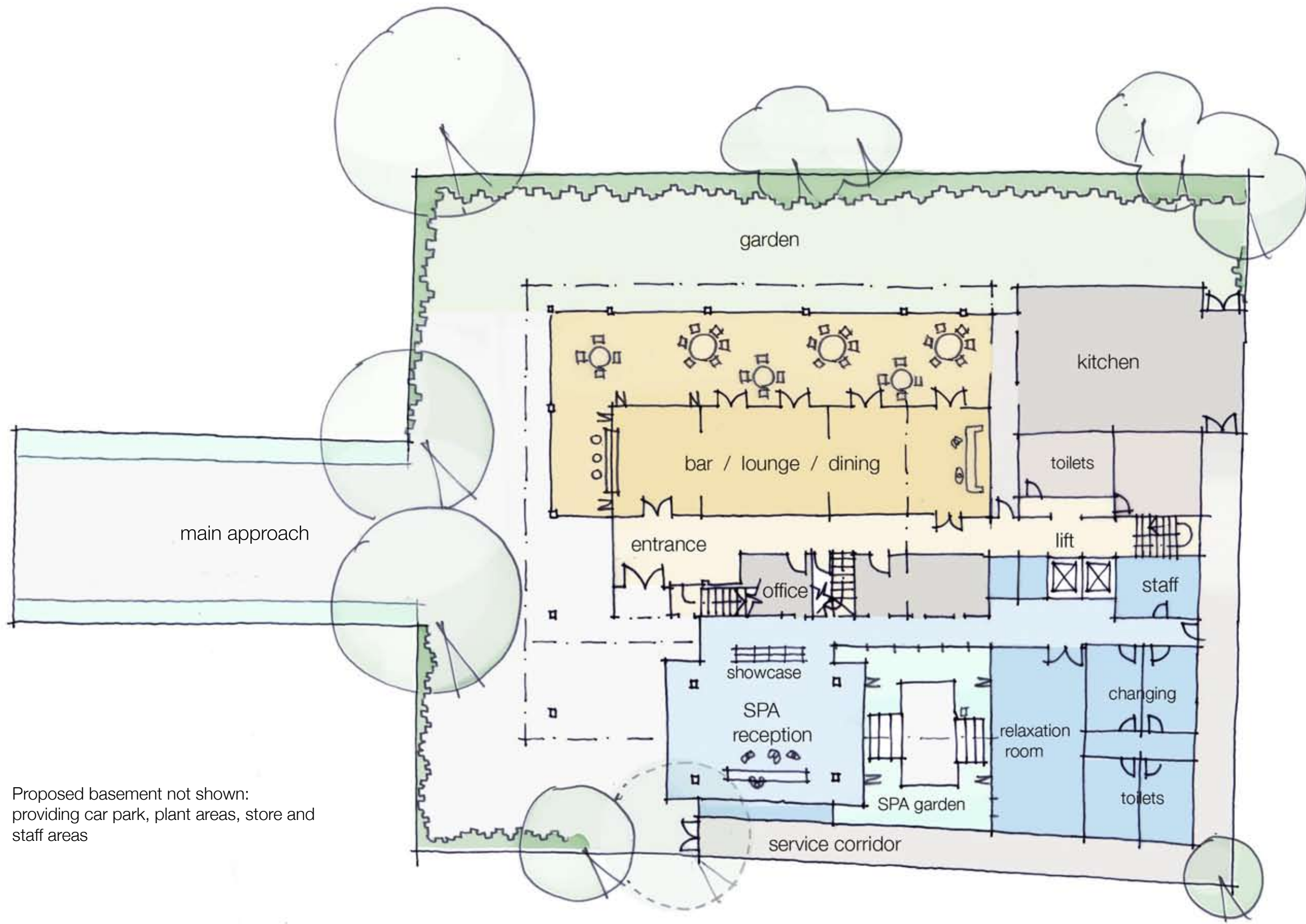
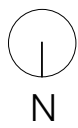
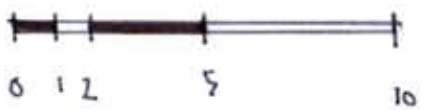


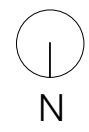
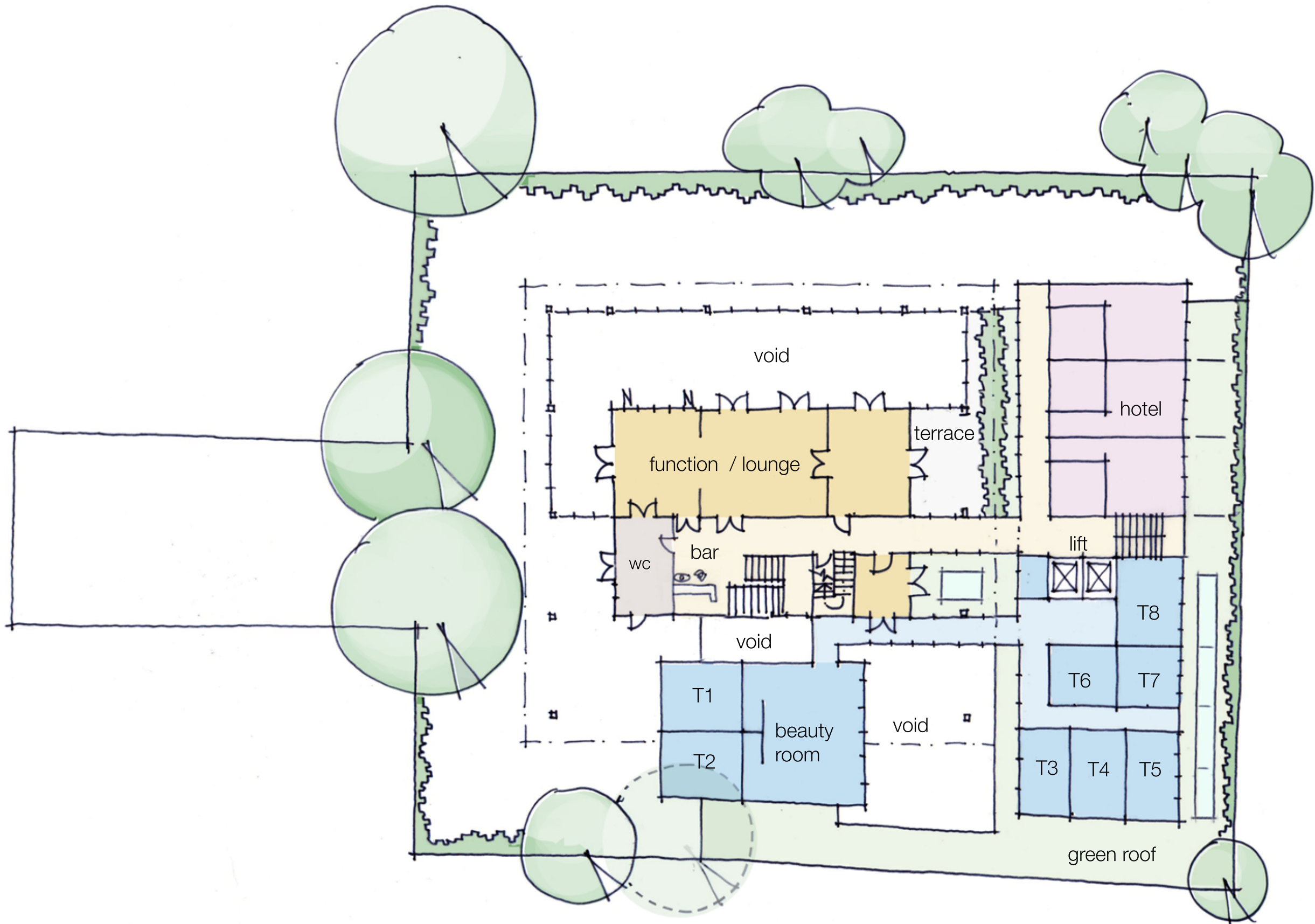
Existing plot area: 1500 sqm

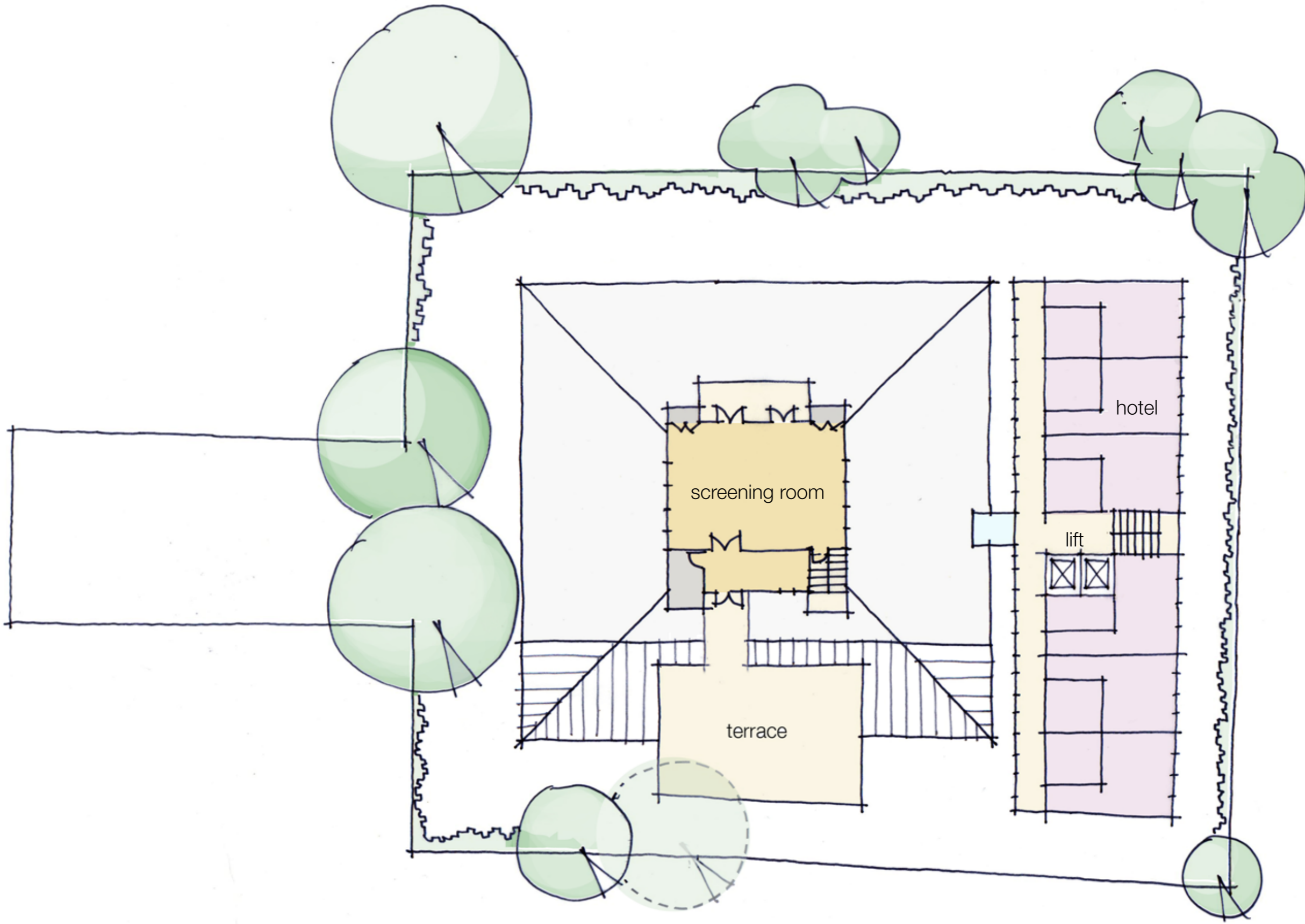


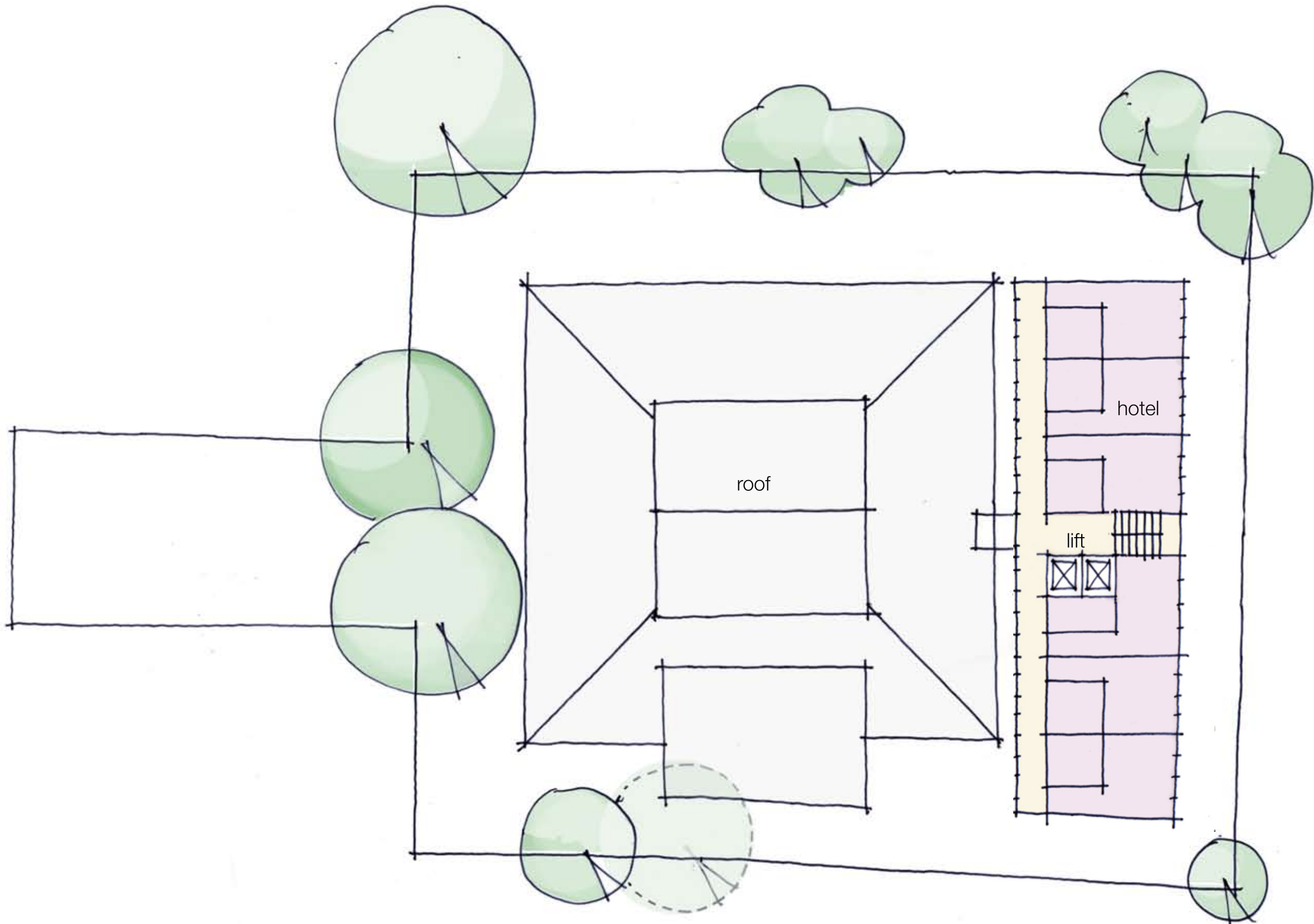


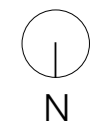
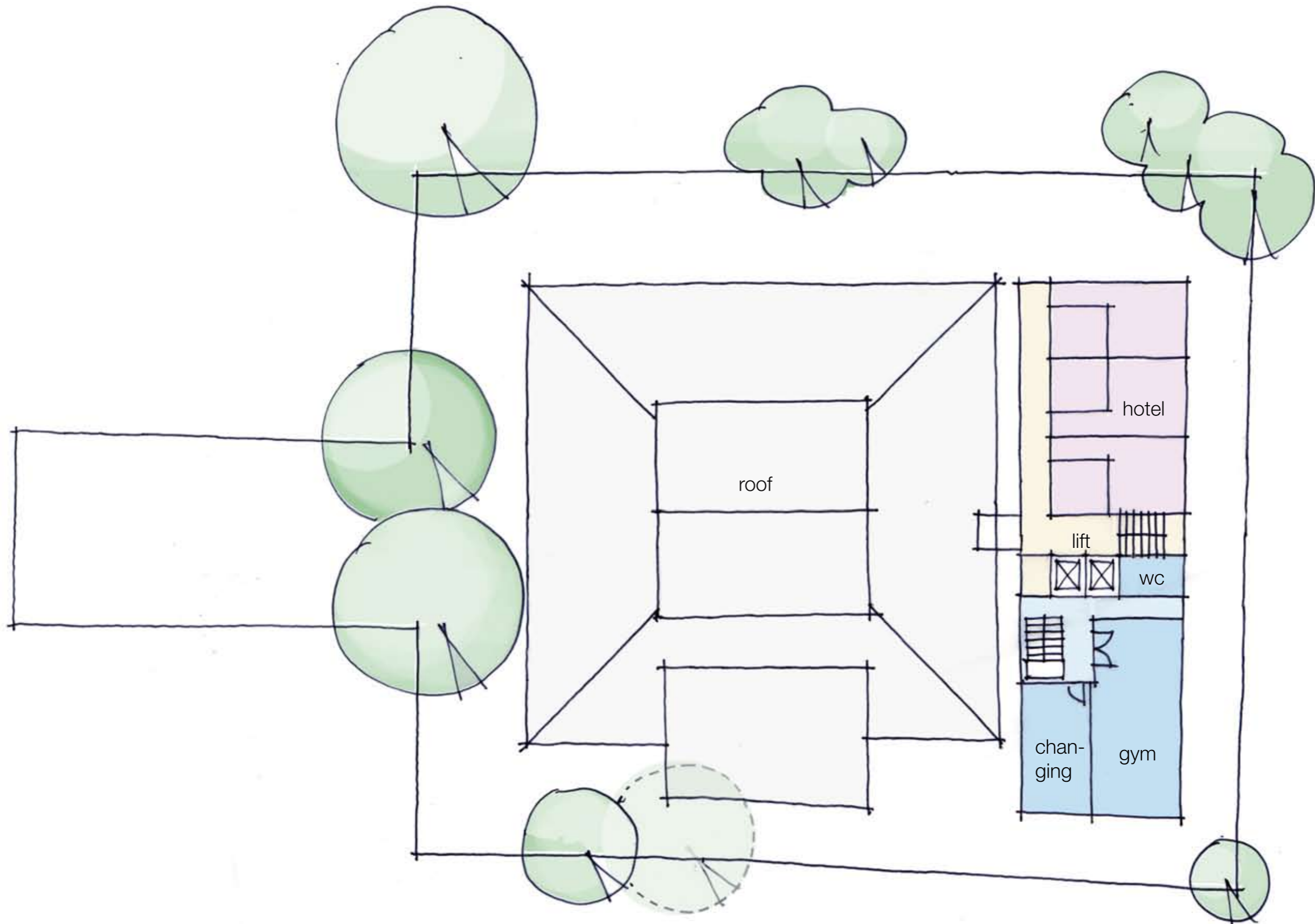
Proposed basement not shown:  
providing car park, plant areas, store and  
staff areas

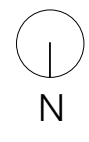
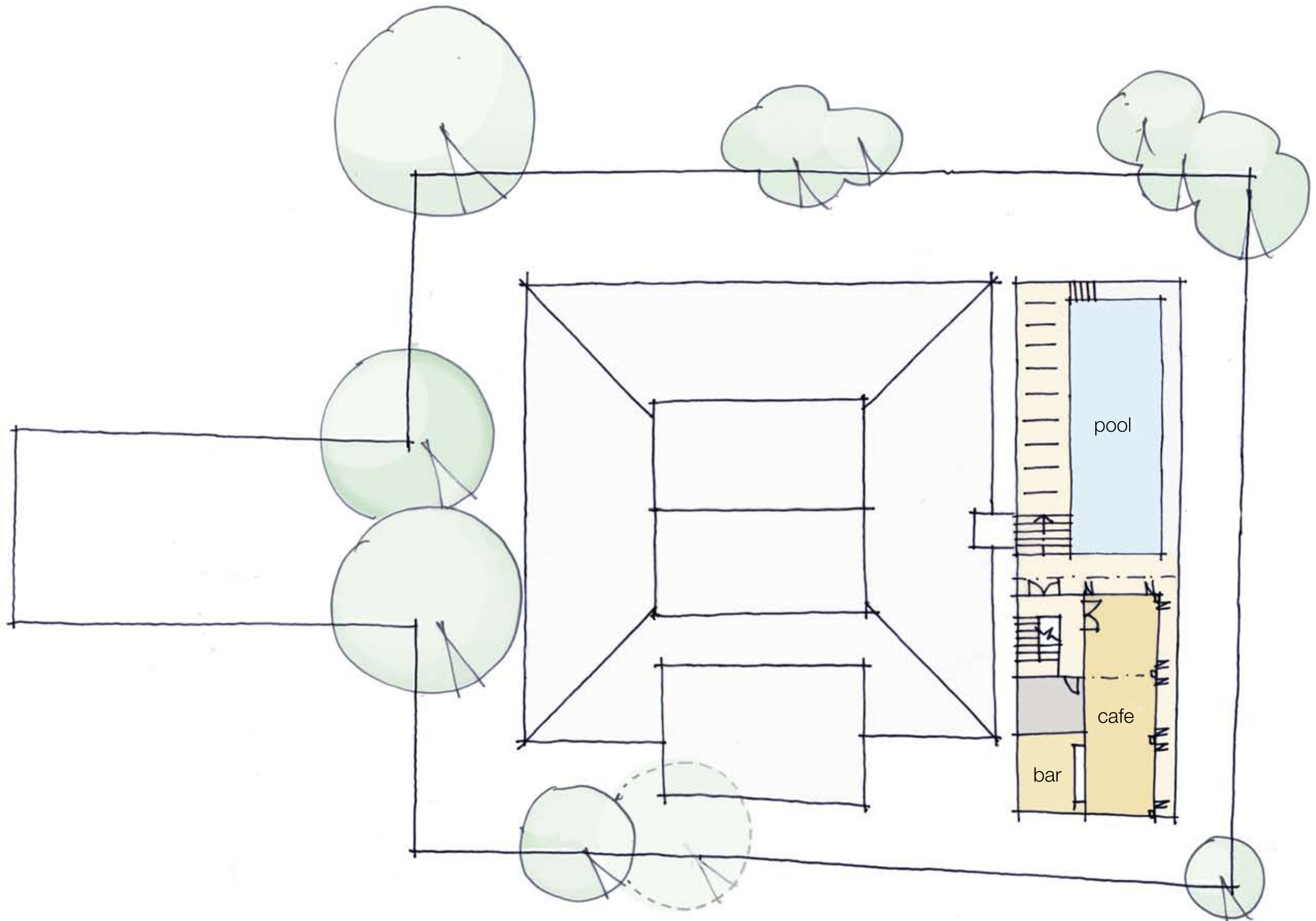












PROPOSED	
USE	sqm
<b>CLUB</b>	<b>1045</b>
Club areas within original house and ground floor	830
Roof top pool area and bar within new build	215
<b>SPA</b>	<b>602</b>
Spa facilities	502
Gym + changing	100
<b>HOTEL</b>	<b>868</b>
<b>SERVICE AREAS</b>	<b>1073</b>
Plant, staff rooms, car park and store	980
Ground floor service corridor	93
<b>TOT.</b>	<b>3588</b>

EXISTING	
FLOORS	sqm
Gnd Floor	300
1st Floor	175
2nd Floor	84
<b>TOT.</b>	<b>559</b>

Existing plot area: 1500 sqm



- club
- hotel
- spa

