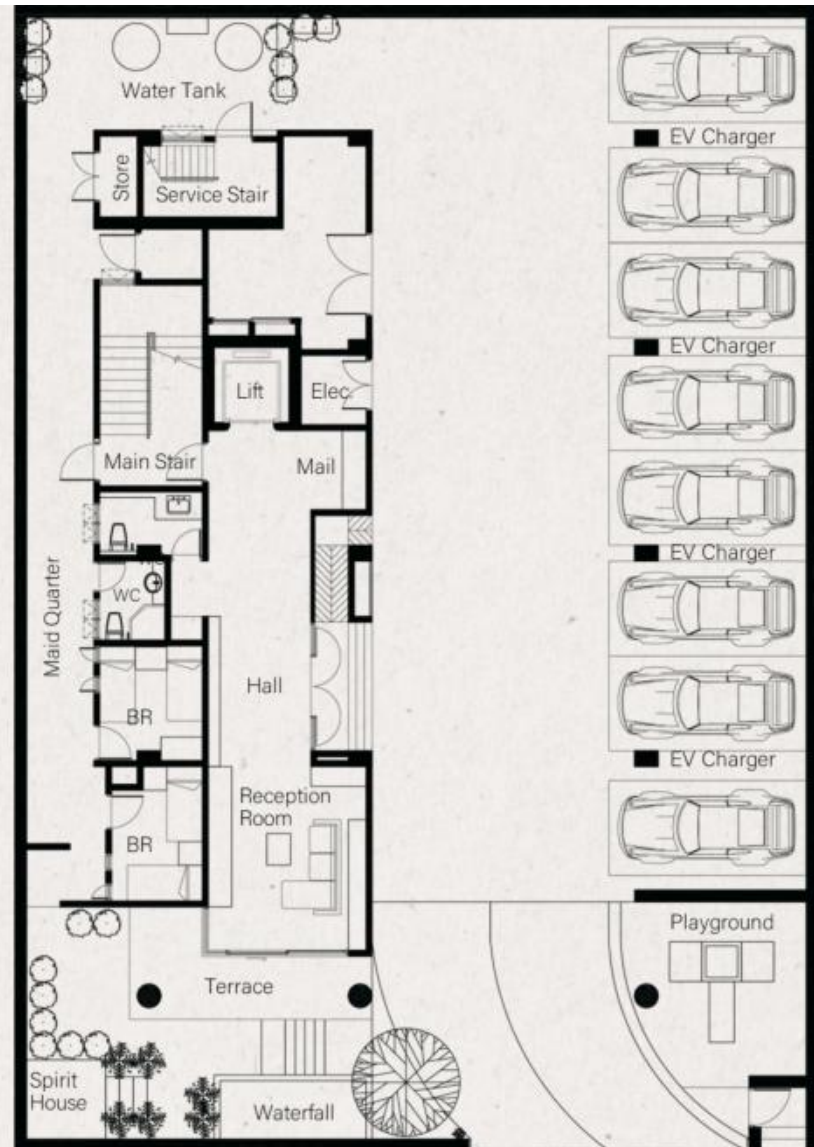


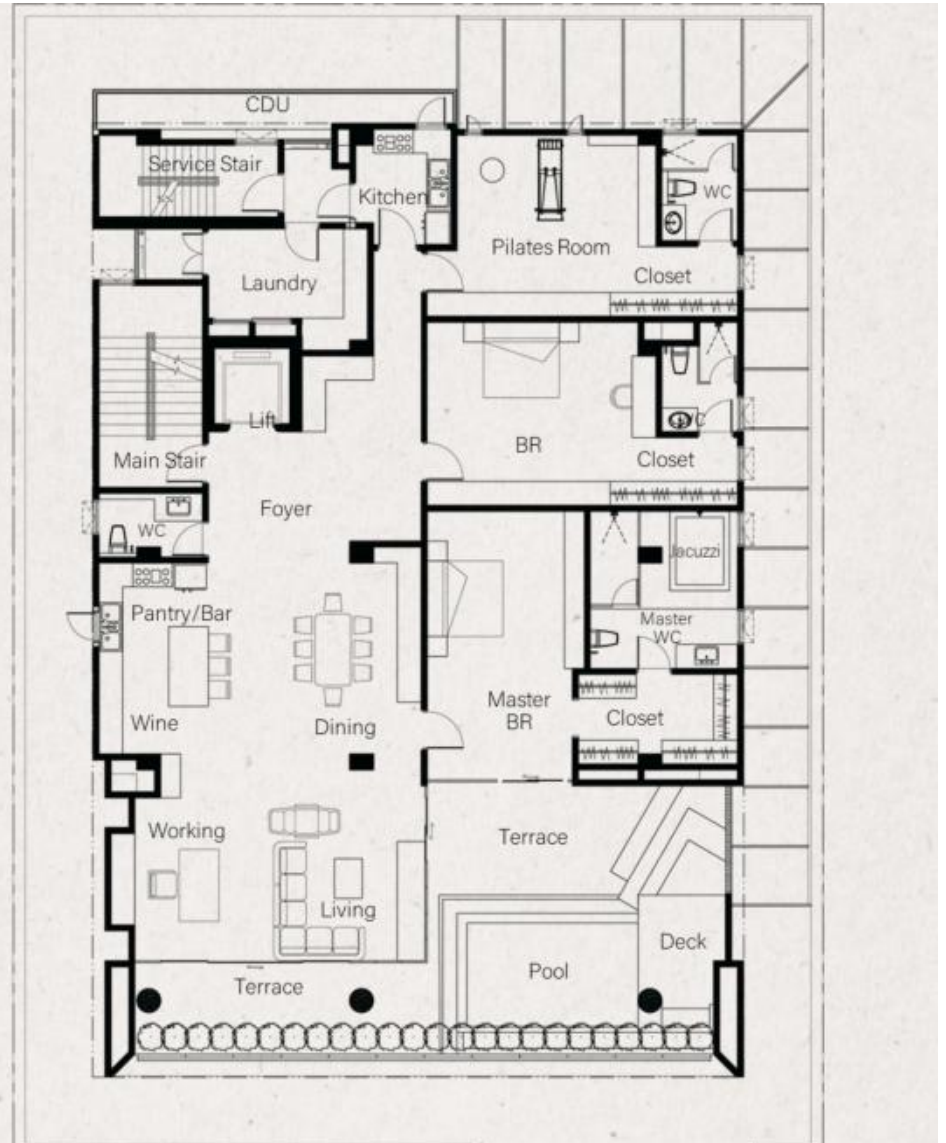
FLOOR G
590 SQ.M.

- Lobby
- Universal Access (Wheel Chair)
- Up to 16 Parking spaces
- EV Charing station
- Garden Terrace
- Playground
- Storage Room
- Maid Quarter



FLOOR 2
POOL VILLA PENTHOUSE
370 SQ.M.

Double Space Living Area
Wine and Bar Lounge
Swimming Pool
Garden Deck
Pilates Room



FLOOR 3 MULTIFUNCTIONAL FLOOR

230 SQ.M..

simplex unit with connecting terrace
Pray room

This floor caters to everyone in the house, providing spacious accommodations accessible without disturbing others. It features two bedrooms and a prayer room, ideal for guest rooms, seniors living or other versatile activities.



FLOOR 4
RESORT PENTHOUSE
355 SQ.M.

Double Space Living Area
Garden and Deck
Terrace



FLOOR 5&6
DUPLEX PENTHOUSE
TOTAL 502 SQ.M.

Lower floor: 251 sq.m.

Double Space Living Area
Private Lift to Upper Floor
Beauty Salon
Wine Room
Bar
Gym



FLOOR 5

FLOOR 5&6
DUPLEX PENTHOUSE
TOTAL 502 SQ.M.

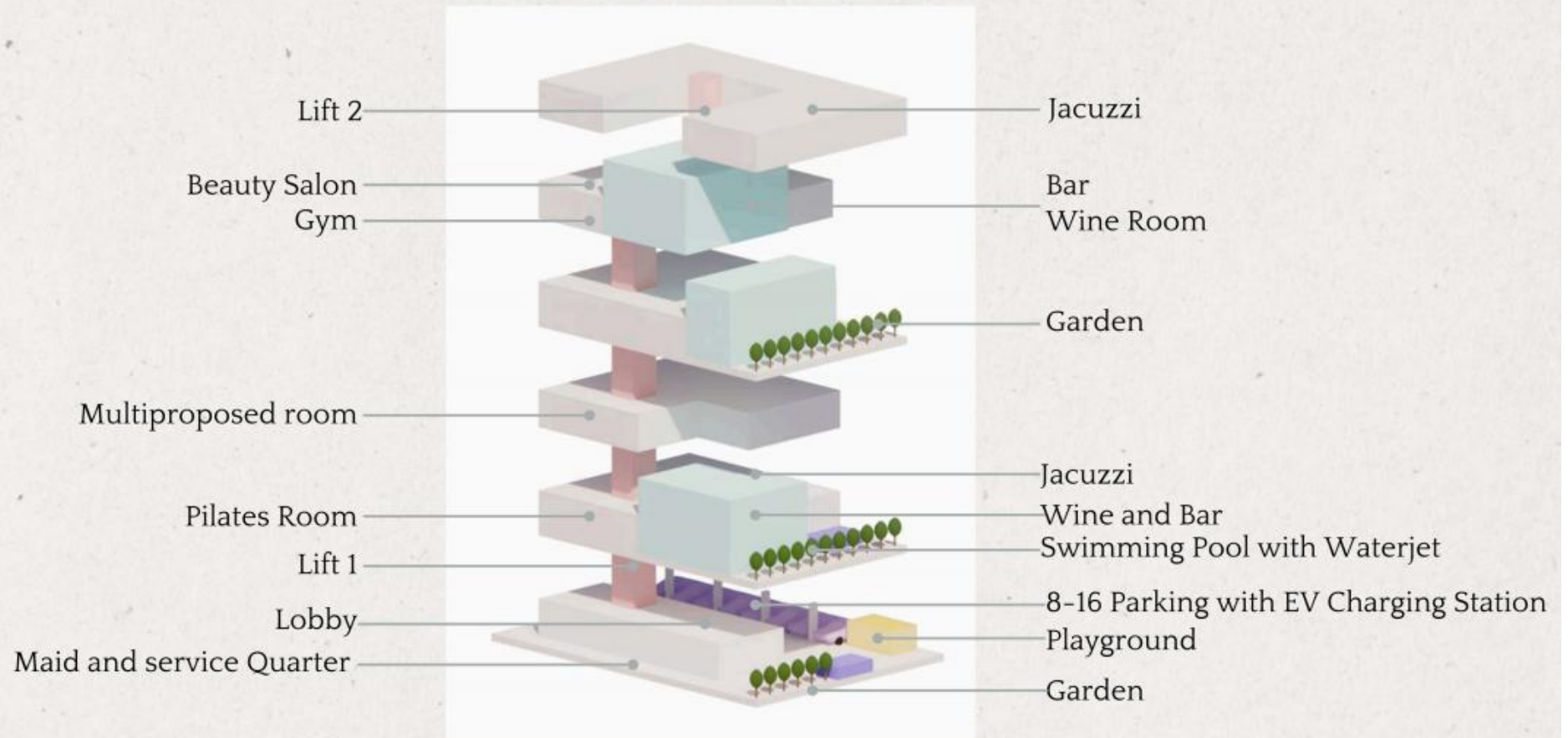
Upper Floor: 251 sq.m.

Masterbedroom with Jacuzzi



FLOOR 6

FACILITIES



The house is sold as-is, except for collectibles, wines, automobiles, and audio equipment.