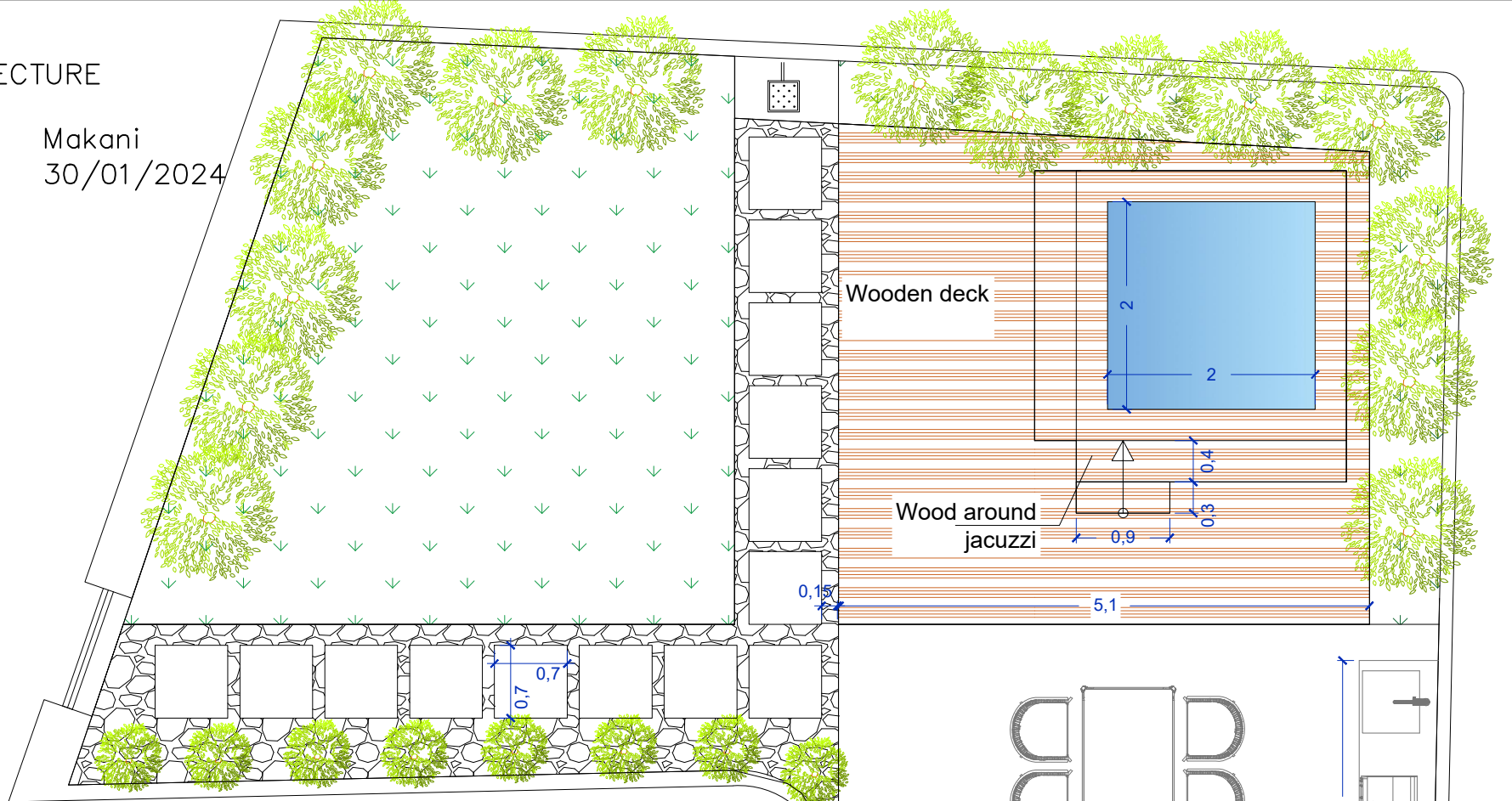


ARCHITECTURE

Project Makani
Date 30/01/2024



PLOT: 182,86 SQM	
------------------	--

BUILT AREA	
GROUND FLOOR	74,85 SQM
FIRST FLOOR	59,16 SQM
SECOND FLOOR	25,87 SQM
TOTAL	159,88 SQM

USABLE SURFACES GROUND FLOOR	
LIVING ROOM	60,53 SQM
GUEST BATHROOM	1,78 SQM
LAUNDRY	2,73 SQM
TOTAL	65,04 SQM

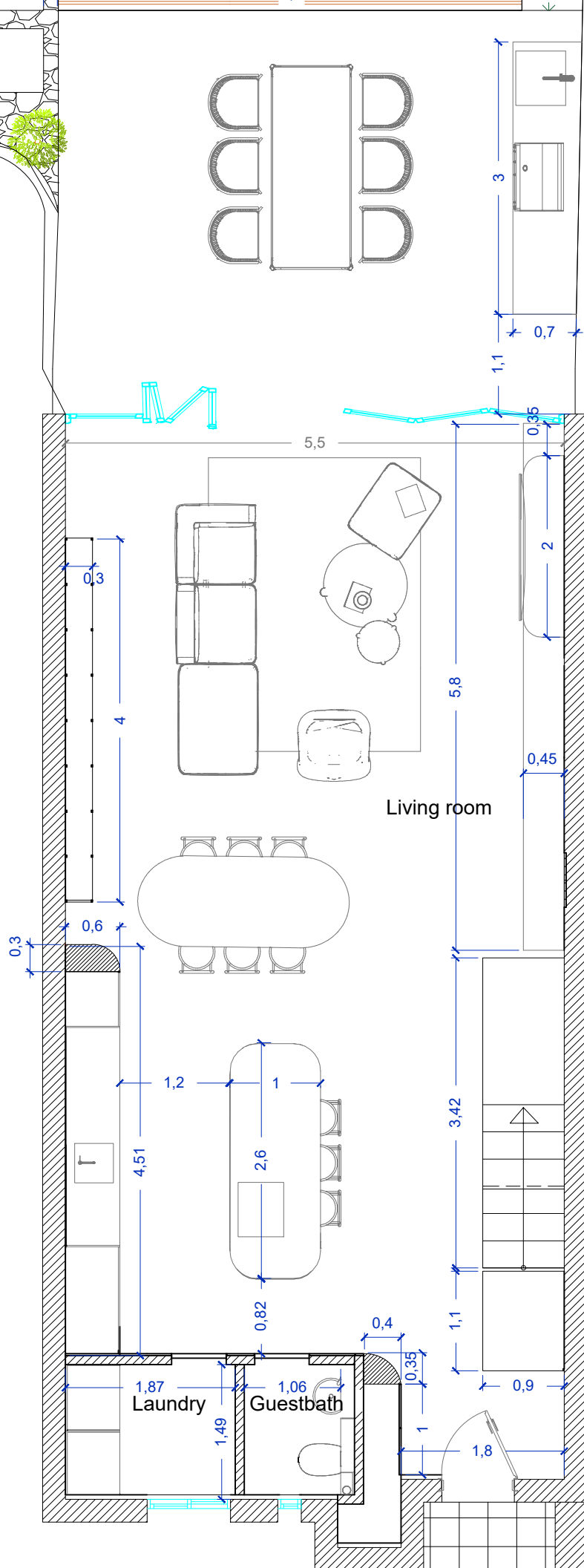
USABLE SURFACES FIRST FLOOR	
BEEDROOM 1	21,65 SQM
MASTER BEDROOM	22,48 SQM
STAIRCASE	6,15 SQM
TOTAL	50,28 SQM

USABLE SURFACES SECOND FLOOR	
BEEDROOM 2	7,87 SQM
HALL	2,10 SQM
WC	2,71 SQM
STORAGE 1	2,97 SQM
STORAGE 2	1,18 SQM
TOTAL	16,83 SQM

TOTAL USABLE SURFACE INSIDE:	132,15 SQM
------------------------------	------------

USABLE TERRACE SURFACE	
EXT GROUND FLOOR	108,79 SQM
TERRACES 1ST FLOOR	14,85 SQM
TERRACES 2ND FLOOR	24,14 SQM
TOTAL	149 SQM

TOTAL USABLE SURFACE WITH TERRACE:	281 SQM
------------------------------------	---------



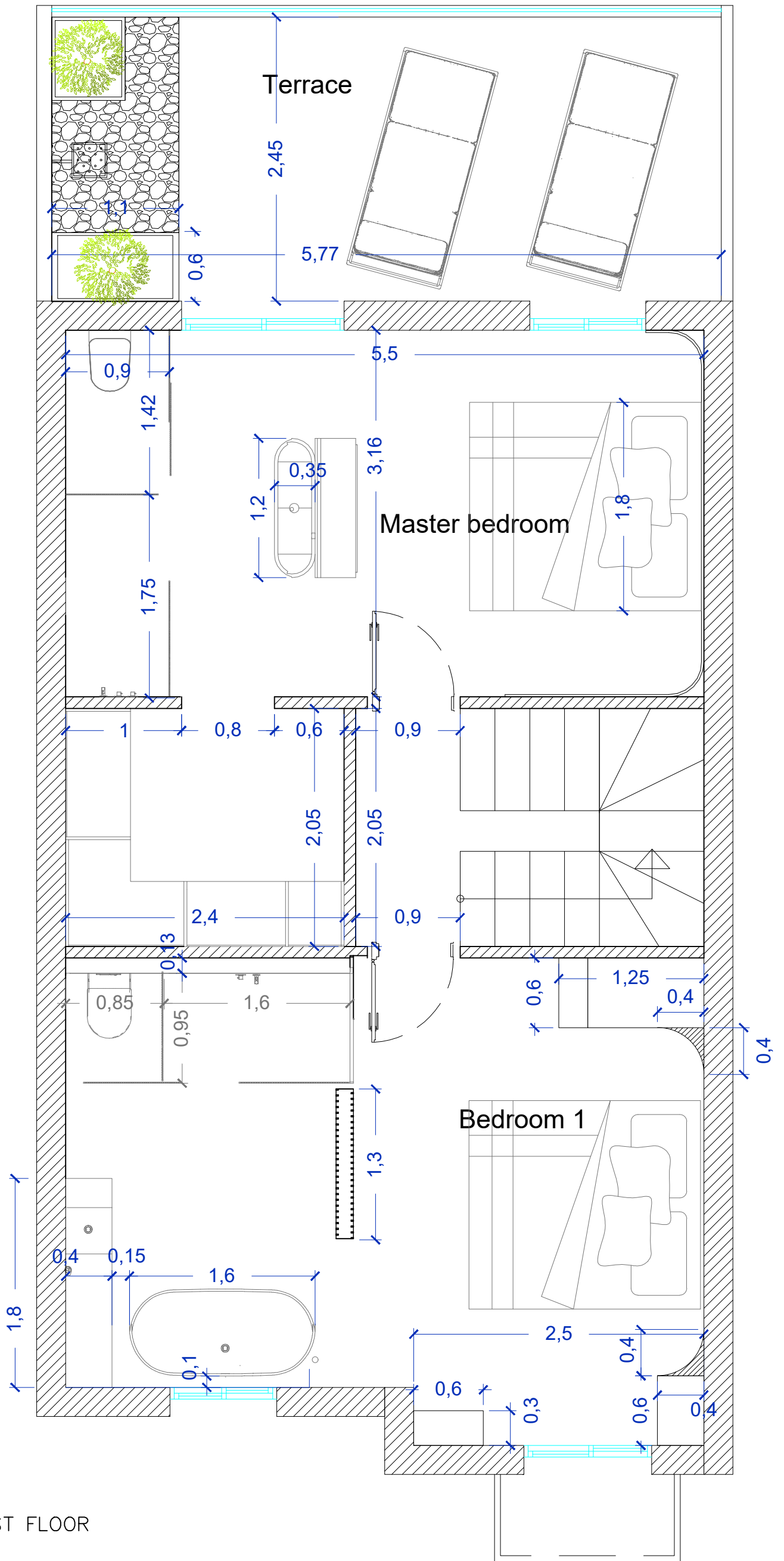
www.normafranck.com

GROUND FLOOR

ARCHITECTURE

Project Makani
Date 30/01/2024

PLOT: 182,86 SQM	
BUILT AREA	
GROUND FLOOR	74,85 SQM
FIRST FLOOR	59,16 SQM
SECOND FLOOR	25,87 SQM
TOTAL	159,88 SQM
USABLE SURFACES	
GROUND FLOOR	
LIVING ROOM	60,53 SQM
GUEST BATHROOM	1,78 SQM
LAUNDRY	2,73 SQM
TOTAL	65,04 SQM
USABLE SURFACES	
FIRST FLOOR	
BEEDROOM 1	21,65 SQM
MASTER BEDROOM	22,48 SQM
STAIRCASE	6,15 SQM
TOTAL	50,28 SQM
USABLE SURFACES	
SECOND FLOOR	
BEEDROOM 2	7,87 SQM
HALL	2,10 SQM
WC	2,71 SQM
STORAGE 1	2,97 SQM
STORAGE 2	1,18 SQM
TOTAL	16,83 SQM
TOTAL USABLE SURFACE INSIDE: 132,15 SQM	
USABLE TERRACE SURFACE	
EXT GROUND FLOOR	108,79 SQM
TERRACES 1ST FLOOR	14,85 SQM
TERRACES 2ND FLOOR	24,14 SQM
TOTAL	149 SQM
TOTAL USABLE SURFACE WITH TERRACE: 281 SQM	



www.normafranck.com

FIRST FLOOR

ARCHITECTURE

Project Makani
Date 30/01/2024

PLOT: 182,86 SQM	
------------------	--

BUILT AREA	
GROUND FLOOR	74,85 SQM
FIRST FLOOR	59,16 SQM
SECOND FLOOR	25,87 SQM
TOTAL	159,88 SQM

USABLE SURFACES	
GROUND FLOOR	
LIVING ROOM	60,53 SQM
GUEST BATHROOM	1,78 SQM
LAUNDRY	2,73 SQM
TOTAL	65,04 SQM

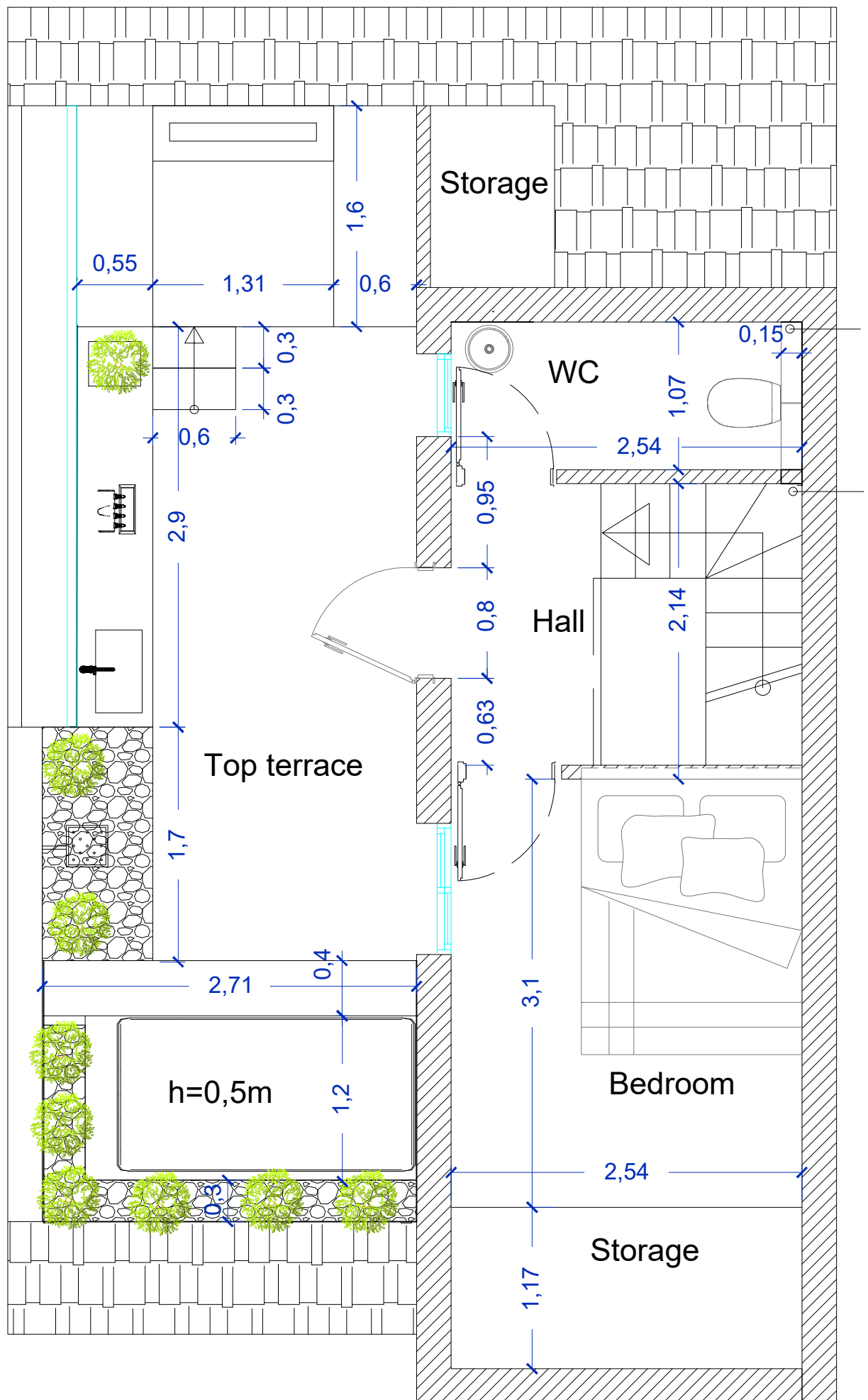
USABLE SURFACES	
FIRST FLOOR	
BEEDROOM 1	21,65 SQM
MASTER BEDROOM	22,48 SQM
STAIRCASE	6,15 SQM
TOTAL	50,28 SQM

USABLE SURFACES	
SECOND FLOOR	
BEEDROOM 2	7,87 SQM
HALL	2,10 SQM
WC	2,71 SQM
STORAGE 1	2,97 SQM
STORAGE 2	1,18 SQM
TOTAL	16,83 SQM

TOTAL USABLE SURFACE INSIDE:	132,15 SQM
------------------------------	------------

USABLE TERRACE SURFACE	
EXT GROUND FLOOR	108,79 SQM
TERRACES 1ST FLOOR	14,85 SQM
TERRACES 2ND FLOOR	24,14 SQM
TOTAL	149 SQM

TOTAL USABLE SURFACE WITH TERRACE:	281 SQM
------------------------------------	---------



www.normafranck.com

SECOND FLOOR