

# VERIDIAN

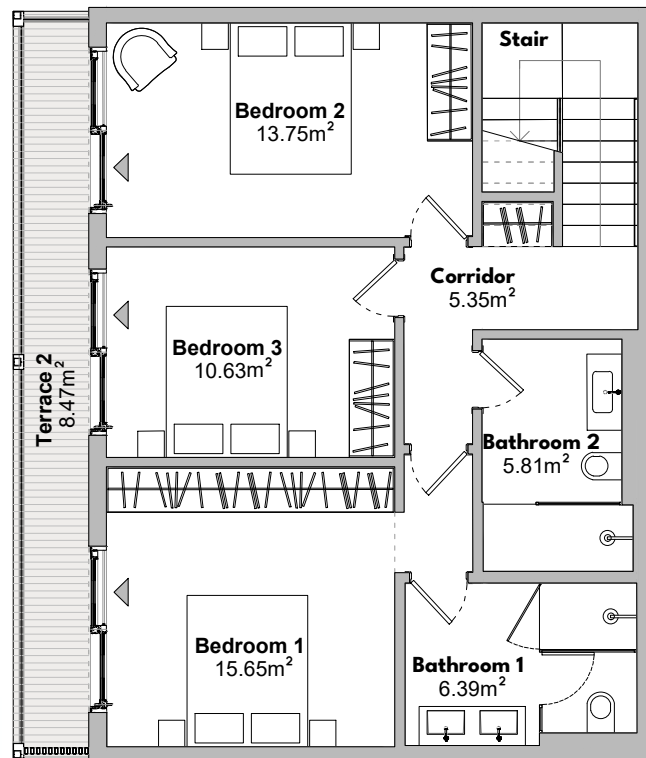
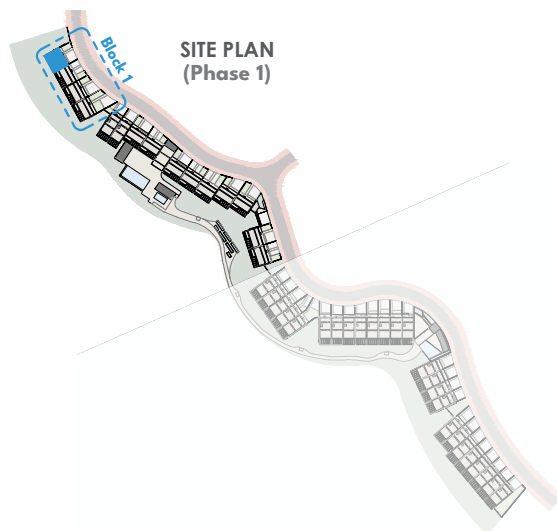
EcoSign HOMES

## RESIDENCE Nº 01

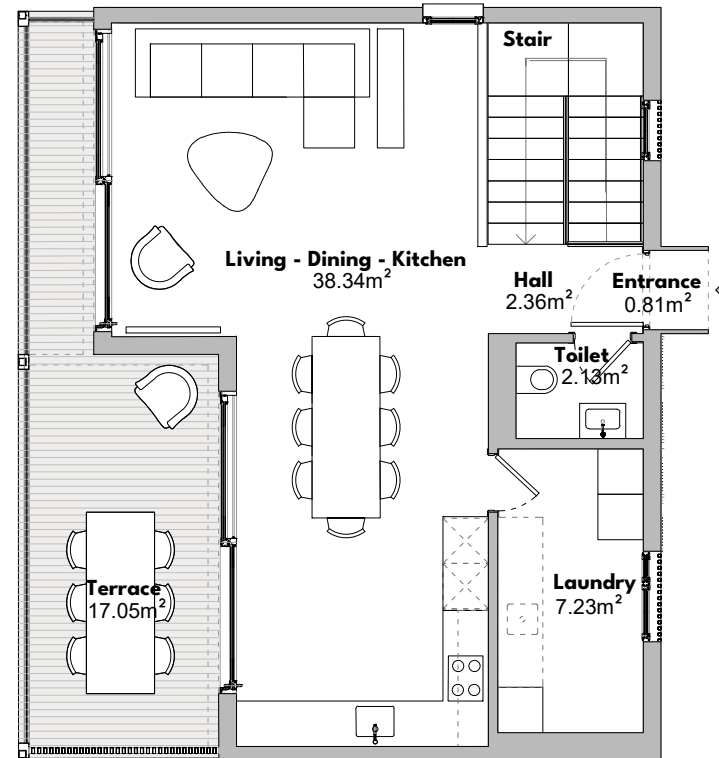
Calle Victoria Kent  
29640 Fuengirola, Málaga, España

BLOCK 1  
TYPE 3

BUILT AREA	
Living Area	141,52m <sup>2</sup>
Terrace Area	29,30m <sup>2</sup>
Garden & Parking	64,36m <sup>2</sup>
<b>Total Built Area:</b>	<b>235,18m<sup>2</sup></b>
ACCORDING TO D. 218/2005	
Useful Area	131,01m <sup>2</sup>
Built Area	167,57m <sup>2</sup>



**GROUND FLOOR PLAN**  
(Lower Level)



**FIRST FLOOR PLAN**  
(Entrance Level)

(\*) This plan may be modified depending on progress of the development. The furniture shown is purely for decorative purposes. The project manager reserves the right to make the necessary changes for any possible functional, aesthetic and legal reasons, without this negatively affecting the quality of the construction. Illustrative dimensions.

Scale Bar (metres)



# VERIDIAN

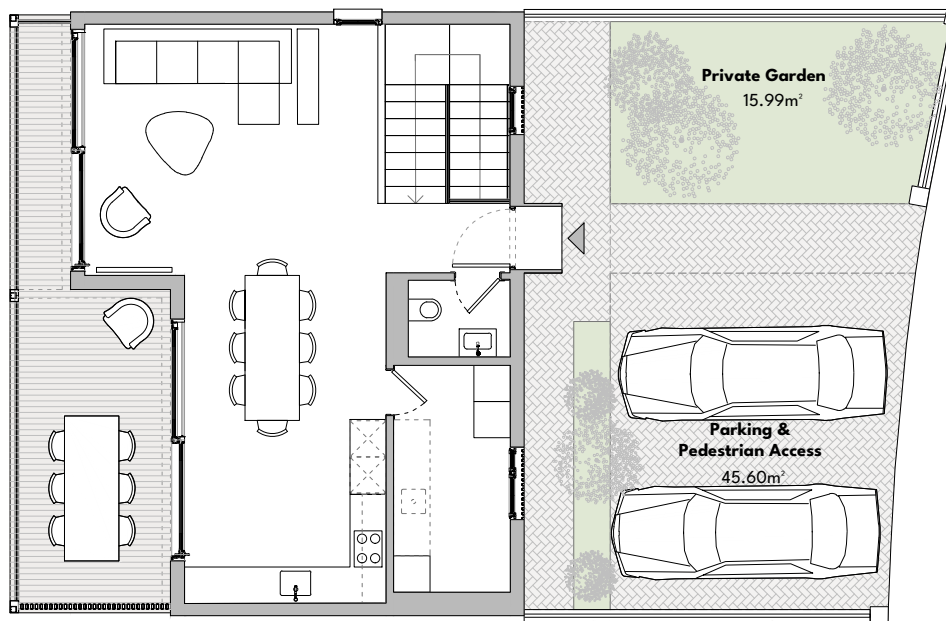
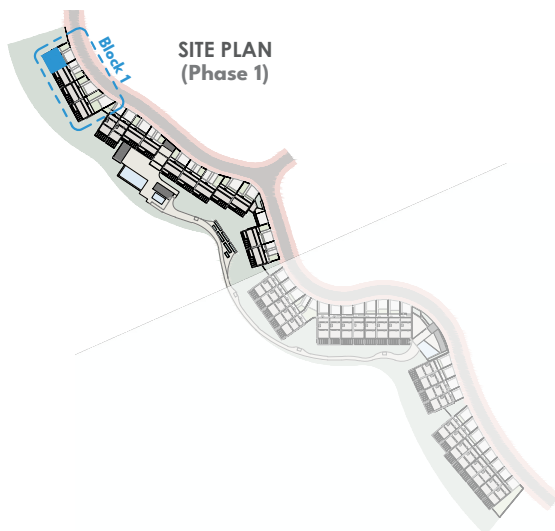
EcoSign HOMES

## RESIDENCE Nº 01

Calle Victoria Kent  
29640 Fuengirola, Málaga, España

BLOCK 1  
TYPE 3

BUILT AREA	
Living Area	141,52m <sup>2</sup>
Terrace Area	29,30m <sup>2</sup>
Garden & Parking	64,36m <sup>2</sup>
<b>Total Built Area:</b>	<b>235,18m<sup>2</sup></b>
ACCORDING TO D. 218/2005	
Useful Area	131,01m <sup>2</sup>
Built Area	167,57m <sup>2</sup>



HOUSE + ENTRANCE + PARKING  
(Entrance Level)

(\*) This plan may be modified depending on progress of the development. The furniture shown is purely for decorative purposes. The project manager reserves the right to make the necessary changes for any possible functional, aesthetic and legal reasons, without this negatively affecting the quality of the construction. Illustrative dimensions.

Scale Bar (metres)

