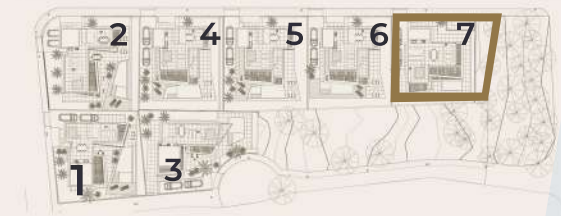


Villa 7

Plot area
464,87 m²

4 - 5
 5
 2
 19 m²



Total

Plot	464,87 m ²
Closed Built surface	328,42 m ²
Garden Area	204,05 m ²
Covered terrace surface	44,96 m ²
Uncovered terrace surface	277,98 m ²

Total Build area 651,35 m²

Ground floor

	Useful area:	Build area:
Closed surface	89,86 m ²	105,70 m ²
Covered terrace	41,17 m ²	44,96 m ²
Outdoor terrace	103,04 m ²	109,80 m ²

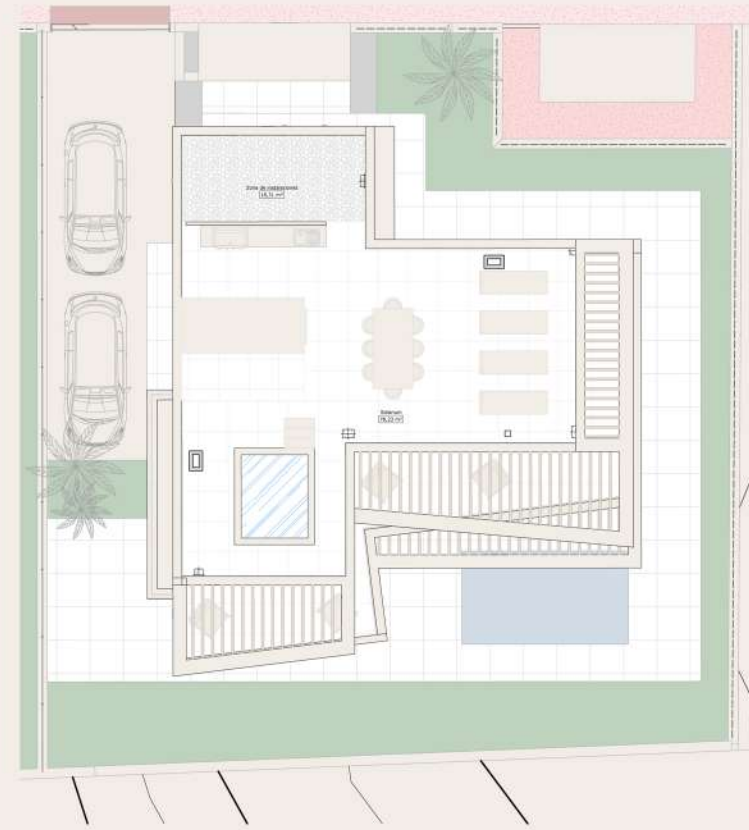
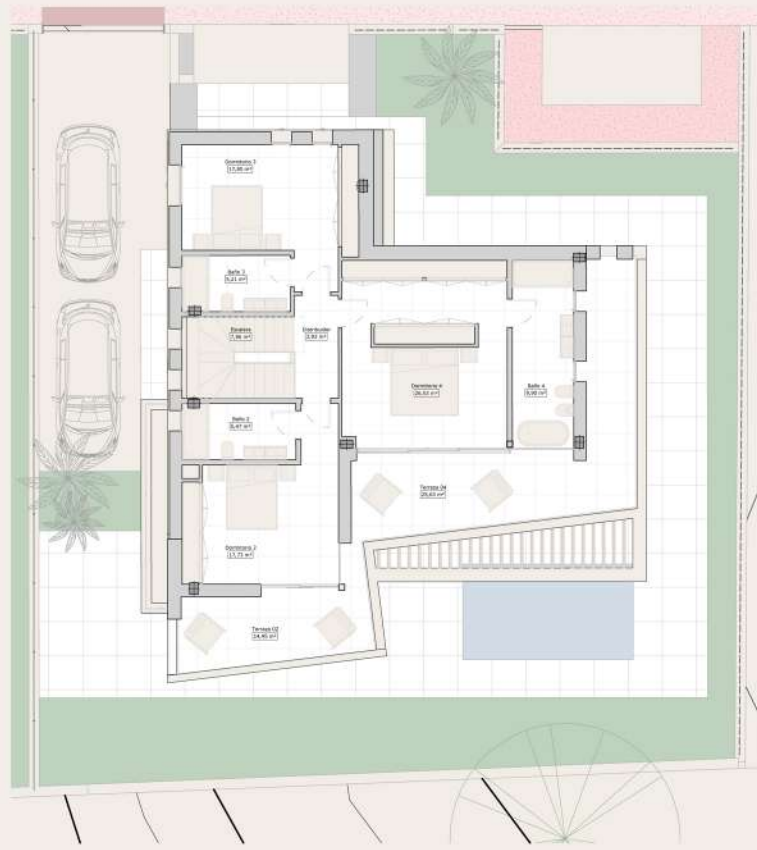
Total area 234,07 m² 260,46 m²

Basement

	Useful area:	Build area:
Closed surface	89,86 m ²	114,24 m ²
Outdoor terrace	5,39 m ²	7,88 m ²

Total area 95,25 m² 122,12 m²





Villa 7

Plot area
464,87 m²

4 - 5 5 P2 19 m²

Total

Plot	464,87 m ²
Closed Built surface	328,42 m ²
Garden Area	204,05 m ²
Covered terrace surface	44,96 m ²
Uncovered terrace surface	277,98 m ²

Total Build area 651,35 m²

First Floor

	Useful area:	Build area:
Closed surface	94,43 m ²	108,48 m ²
Outdoor terrace	40,08 m ²	44,44 m ²
Total area	134,51 m²	152,92 m²

Solarium

	Useful area:	Build area:
Uncovered terrace	245,06 m ²	277,97 m ²
Covered terrace	41,17 m ²	44,96 m ²
Closed surface	268,45 m ²	328,42 m ²
Total area	544,45 m²	651,35 m²

