

Villa 2

Plot area
501,32 m²

5 - 6 5 P2 35,75 m²

Total

Plot	501,32 m ²
Closed Built surface	386,67 m ²
Garden Area	209,95 m ²
Covered terrace surface	43,57 m ²
Uncovered terrace surface	299,26 m ²

Total Build area 729,50 m²

Ground floor

	Useful area:	Build area:
Closed surface	89,02 m ²	109,81 m ²
Covered terrace	40,30 m ²	43,57 m ²
Outdoor terrace	126,48 m ²	127,92 m ²

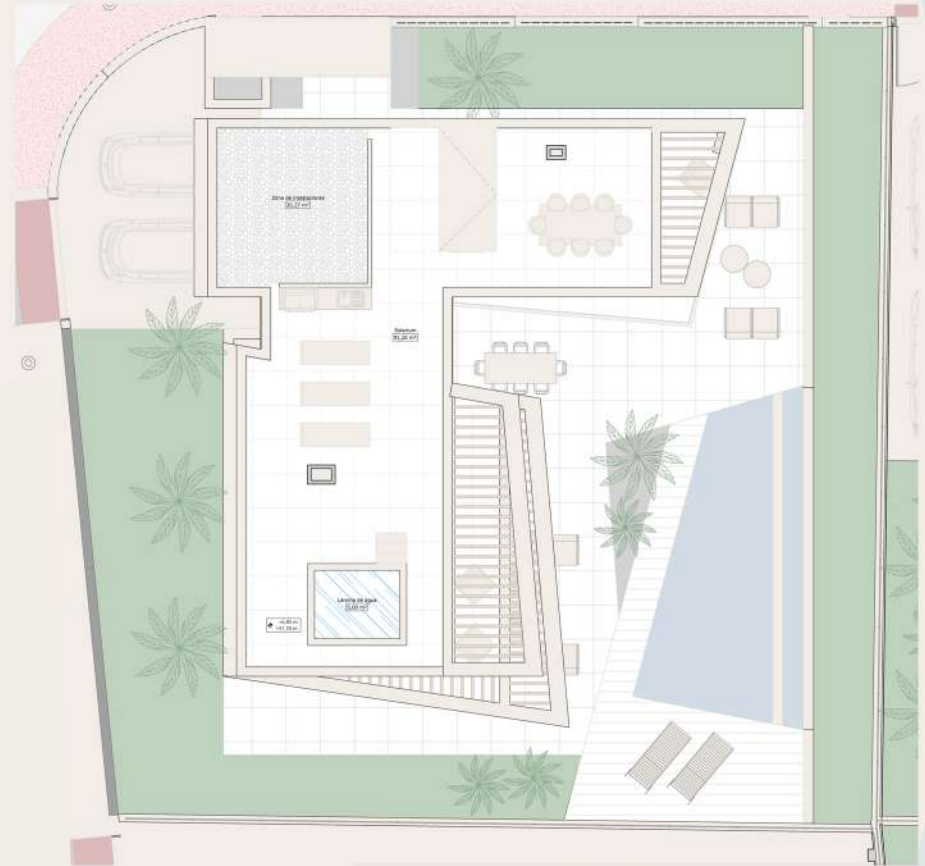
Total area 255,80 m² 281,30 m²

Basement

	Useful area:	Build area:
Closed surface	108,30 m ²	135,61 m ²
Outdoor terrace	7,58 m ²	11,08 m ²

Total area 115,88 m² 146,69 m²





Villa 2

Plot area
501,32 m²

5 - 6
 5
 2
 35,75 m²



Total

Plot	501,32 m ²
Closed Built surface	386,67 m ²
Garden Area	209,95 m ²
Covered terrace surface	43,57 m ²
Uncovered terrace surface	299,26 m ²

Total Build area 729,50 m²

First Floor

	Useful area:	Build area:
Closed surface	109,16 m ²	141,25 m ²
Outdoor terrace	21,31 m ²	27,50 m ²
Total area	130,47 m²	168,75 m²

Solarium

	Useful area:	Build area:
Uncovered terrace	266,91 m ²	299,26 m ²
Covered terrace	40,30 m ²	43,57 m ²
Closed surface	306,47 m ²	386,67 m ²
Total area	613,68 m²	729,5 m²

