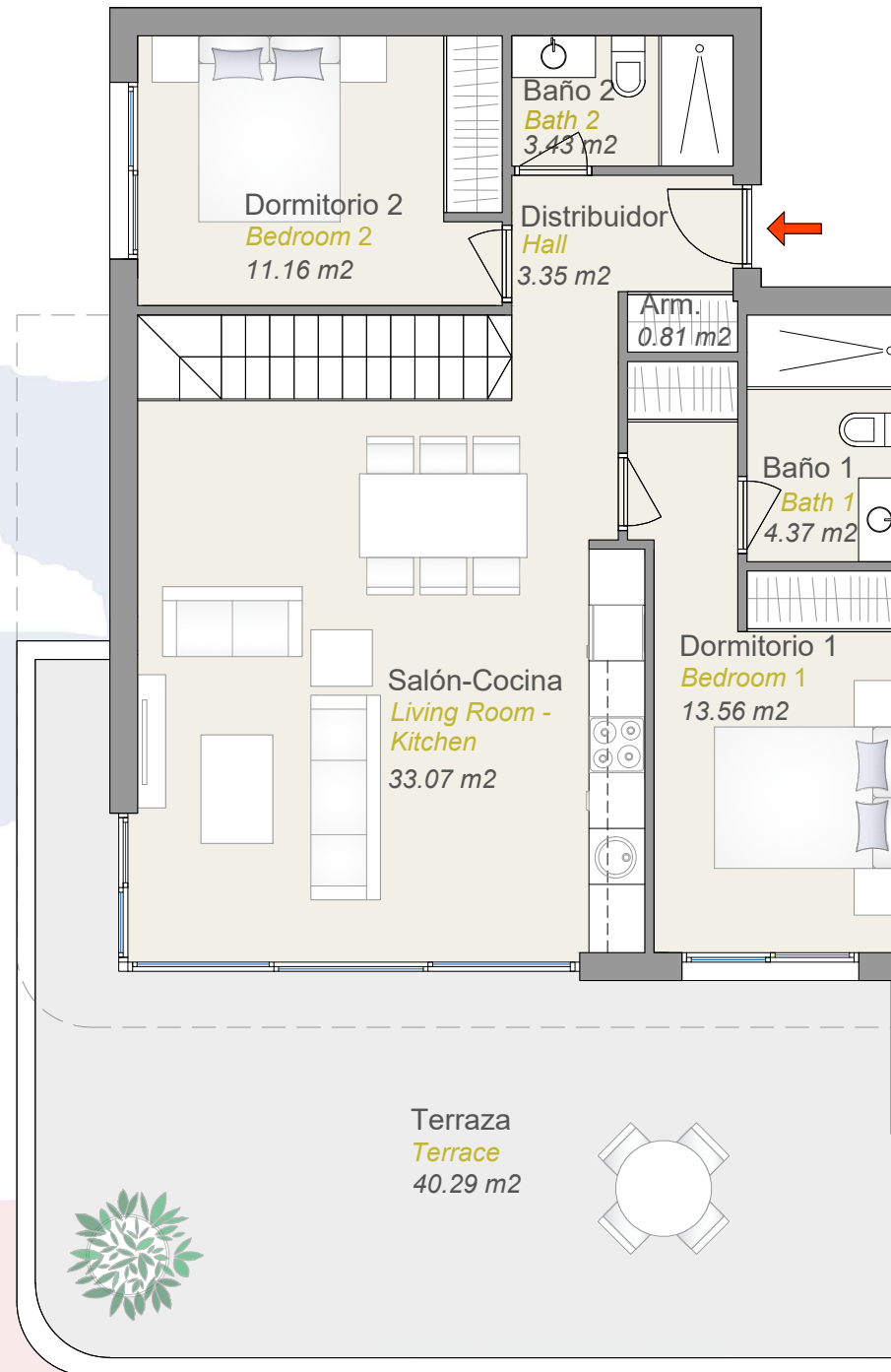
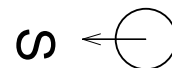
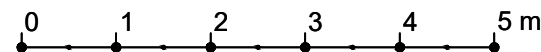
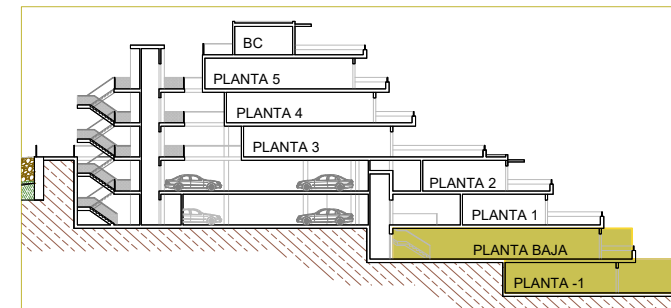


PLANTA BAJO RASANTE



PLANTA PRINCIPAL



SUPERFICIES ÚTILES	
PLANTA PRINCIPAL	
DISTRIBUIDOR	3.35 m ²
ARMARIO	0.81 m ²
SALON-COMEDOR-COCINA	33.07 m ²
DORMITORIO 1	13.56 m ²
DORMITORIO 2	11.16 m ²
BAÑO 1	4.37 m ²
BAÑO 2	3.43 m ²
TERRAZA	40.29 m ²
PLANTA BAJO RASANTE	
ESCALERA	4.09 m ²
ESTANCIA	70.01 m ²
LAVANDERÍA	4.19 m ²
TOTAL SUPERFICIE ÚTIL	188,33 m²

SUPERFICIES CONST APROX. + PP. ZZCC.	
SUP. PLANTA PRINCIPAL + BAJO RASANTE + PP DE ZZCC	208,95 m ²
SUP. TERRAZA	44.30 m ²
TOTAL VIV. + TERRAZAS + ZZCC	253,25 m²

SUP. JARDIN	64.02 m ²
-------------	----------------------

