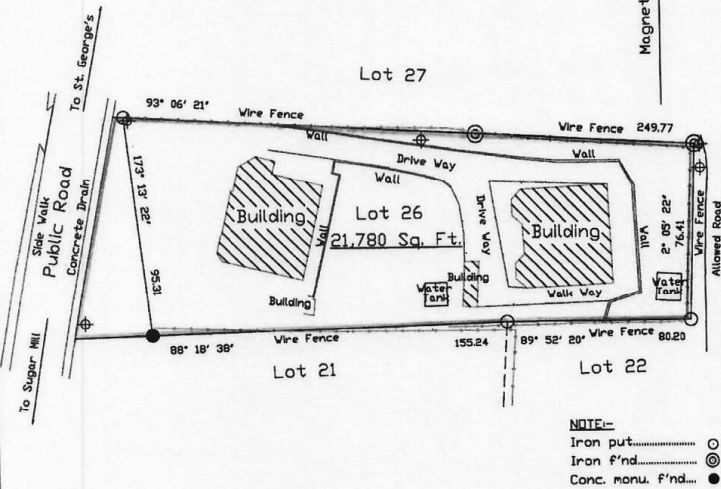


# GRENADA W. I.



SCALE:- 1-IN.=50FT.

Plan of a parcel of land bordered pink containing 21,780 Sq. Ft.  
 being Lot 26 situate at Grand Anse in the parish of St. George.  
 Surveyed on the 18th. day of January 2017 for FRANCIS and  
JULIA JEREMIAH.

*[Signature]*

DAVID S. ABRAHAM  
 L.C.D. LAND SURVEYOR